

ALGEMENE SEISOEN OORSIG

Bladsy

15

*Deur: Stefan Jordaan,
Raisins SA*

AANSTELLING VAN NUWE HOOF UITVOERENDE BEAMPTTE WESSEL LEMMER

Bladsy

42

*Deur: Madene Conradie,
Raisins SA*

ARIDECO PROJEK

Bladsy

49

*Deur: Madene Conradie,
Raisins SA*

IN DIE UITGAWE:





CONTENT DISCLAIMER AND WAIVER

All information obtained from authors and/or various role players within the sector was done and compelled by the various entities as cited under each article. This is the opinion of the various authors, as indicated. Raisins SA cannot be held liable for any misleading and/or faulty data.

It is however the responsibility of Raisins SA to evaluate the quality and/or accuracy of all content published to ensure that all role players obtain the most accurate and latest studies and/or news within the sector, while taking account the author's right to freedom of speech. As Raisins SA is not the author of all the content, Raisins SA will not accept any liability with regards to published articles/statistics/data analysis and/or any other related data/factual article published.

Raisins SA would also like to emphasize that all information received and/or sent will be utilized for the intended purpose and protected in terms of the POPIA Act.

Voorwoord



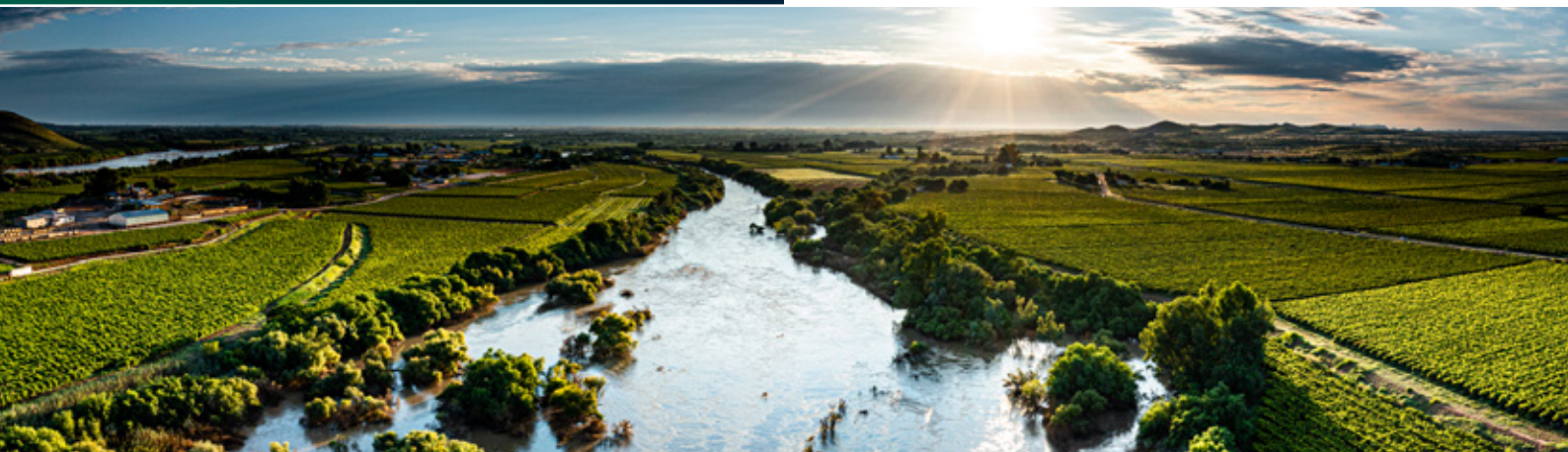
Beste Producente

Soos ons die einde van nog 'n jaar nader, is dit 'n gepaste tyd om vinnig te reflekteer oor die jaar wat verby is en te kyk na volgende seisoen. Die afgelope drie jaar was baie uitdagend, maar hierdie afgelope seisoen het egter verligting gebring. Markte het positief gedraai en produksie op plaasvlak herstel. Alhoewel logistiek steeds 'n uitdaging bly, is daar verbeterings. Ons kon teen tyd van hierdie skrywe ongeveer 71 000 ton (verhoging van 36%) se produk bemark, einde Oktober 2024, wat ons historiese rekord ewenaar en basies twee maande se verskepings oorlaat.

Ons is opgewonde om ons nuwe HUB, Mnr. Wessel Lemmer, te verwelkom in Januarie 2025. Ons sien uit na sy vars perspektief en leierskap om die Suid-Afrikaanse rosyntjiebedryf na die volgende vlak te neem. Wessel, alle sterkte!

Die oesvoorspelling vir die komende seisoen word op 104,000 ton geskat, met markte wat positief bly. As ek terugkyk oor die 11 maande, is daar verskeie projekte wat uitstaan:

- **Digitalisering van AgriHub:** Gedryf deur Madene Conradie, ondersteun hierdie inisiatief die lugbespuitingprogram van FruitFly Africa en hou addisionele toekomstige voordele in.
- **Proeflopie vir vermindering van papierwerk:** Ook gelei deur Madene, hierdie proeflopie poog om doeltreffendheid te verhoog en die administratiewe las op ons lede te verminder.
- **Goedkeuring van IDC-fondse:** Sedert die tweede kwartaal van 2024 goedgekeur, wag ons angstig op die finale uitslag om producente in moeilike finansiële situasies te ondersteun.



- **Herstrukturering van Plant SA en die Wingerdverbeteringsvereniging:** Hierdie herstrukturering poog om die stem van produsente te versterk en om vars na die huidige skema te kyk. Die doel is om risikos van die waarde-ketting, wat deel in plant materiaal te verminder.
- **Uittrede uit SAPO Trust:** Raisins SA het formeel uit SAPO Trust getree om hulpbronne te herfokus op die vermindering van plantmateriaal risiko vir ons produsente te bewerkstellig.
- **Lugbespuiting:** Dit sal onder 'n nuwe bedeling bestuur word om doeltreffendheid te verhoog en sterker insette van Raisins SA-bestuur toe te laat.
- **Wingerd Akademie en Model Plaas (VAMF):** Deurlopende werk word gedoen om die groter wingerd industrieë te ondersteun. Stefan Jordaan is aangestel as Algemene Bestuurder om aktiwiteite by VAMF aan te dryf. Raisins SA is in die proses om 'n diensvlak-ooreenkoms met VAMF te onderteken om broodnodige N&O te doen oor kultivarontwikkeling, onderstok-evaluasies, Droog op die Wingerd-proewe, besproeiing, en meer. Ons sien uit daarna dat Stefan en sy span 'n beduidende impak sal maak.
- **'n Verskeidenheid van inligting sessies en publikasies:** Gedurende 2024 is daar verskeie sessies in verskillende formate aangebied, om die werksaamhede van Raisins SA vir die produsent te deel. Daar is ook verdere publikasies vrygestel in die vorm van ons jaarverslag, nuusbriewe, kostegids, industrie statistiek boek, en persverklarings.



Hierdie is my laaste bydrae tot die Raisins SA-nuusbrief. Ek wil my opregte dank uitspreek aan die Raisins SA- en VAMF-personeel vir hul ondersteuning oor die afgelope sewe en 'n half jaar. Ek is ook dankbaar teenoor die direksie van Raisins SA, vir die geleentheid om as Raisins SA se uitvoerende hoof te kon dien. Ek sien nou uit daarna om die bedryf in 'n ander hoedanigheid te dien.

Ek wens julle almal 'n geseënde Kerstyd toe, en sien uit daarna om in die nuwe jaar saam te werk. Sterkte vir almal se nuwe seisoen! Veilig reis. ■

Hartlike groete

Dr Ferdie Botha

Inhoud

NAVORSING & ONTWIKKELING

02. OLIFANTSRIVIER VELDDAGTOER >

05. METOS® SA PARTNERSHIP PROTECTS A SWEET TREASURE >

09. WEERVERSLAG KWARTAAL 4 >

15. ALGEMENE SEISOEN OORSIG >

17. KULTIVAR PROEWE OPEDAG >

MARKTOEGANG, INTELLIGENSIE & ONTWIKKELING

20. VK BESOEK OKTOBER 2024 >

22. AMPTELIKE OESSKATTING VIR 2024/25 >

23. BENEFITS OF IMPLEMENTING SUSTAINABILITY IN FARMING >

26. DRIED FRUIT SOUTH AFRICA >

TRANSFORMASIE

29. MERIT BURSARIES >

30. 7TH ANNUAL 'GIRL, YOU KNOW I MATTER' WOMEN'S RETREAT >

32. A YEAR IN REVIEW - SCATEC BURSARY PROGRAM >

35. NAFU ALLOCATES FUNDS TO SUPPORT MAIZE PLANTATION >

36. RAISINS SA TRANSFORMATION OVERVIEW >

37. FRUIT ATTRACTION, SPAIN TRIP >

38. NAMC CHAIRPERSON VISITS RAISIN INDUSTRY >

INLIGTING & KOMMUNIKASIE

42. RAISINS SA VERWELKOM WESSEL LEMMER AS NUWE HOOF UITVOERENDE BEAMPTE >

44. RAISINS SA APPOINTS SIMONE OLIPHANT AS ACTING CHIEF EXECUTIVE OFFICER >

INLIGTING & KOMMUNIKASIE

45. CANNABIS IN THE WORKPLACE >

47. SOFT AND CHEWY OAT AND RAISIN COOKIES WITH WALNUTS IN A JAR >

49. ARIDECO PROJEK >

51. SAGAP OUDITS 2024 >

52. ORANGE DESCENT CANOE MARATHON >

53. KALENDERS >

BEDRYFSTRUKTURE

56. GARIEP WATCH TERUGVOER 2024 >

59. IS SOUTH AFRICA SPENDING SUFFICIENTLY ON AGRICULTURAL RESEARCH? >

62. VINE ACADEMY AND MODEL FARM OORSIG KWARTAAL 4 >



Navorsing & Ontwikkeling



Olifantsrivier Velddagtoer

Deur: Raisins SA se tegniese span: Stefan Jordaan, Stacey Flemming, Abraham Vermeulen, Alberto Brandt en Dr Andries Daniels



Die Olifantsrivier-velddagtoer het op 4 Desember 2024 by Pierre van Heerden se plaas, Dwarsdeur, afgeskop.

Die keuse van onderstok vir die enting van boswingerdkultivars om optimale groei, produksie en kwaliteit te bevorder – met inagneming van spesifieke grondtipes en klimaatstreke – is lank reeds ‘n omstrede onderwerp binne die wingerdboubedryf.

In 2018 het Raisins SA en die Suid-Afrikaanse Tafeldruifbedryf (SATI) vir Provar, ‘n onafhanklike evalueerder wat spesialiseer in nuwe kultivars en onderstokke, betrek om proewe op beide bestaande en opkomende onderstokopies uit te voer.

Aangesien Selma Pete destyds die mees onlangs bekendgestelde rosyntjekultivar was, is dit as die bosstokkultivar gebruik om verskeie onderstokvariëteite te assesseer. Die proef wat by Dwarsdeur gedoen is, is in 2022 begin, waartydens Kebo Toolo van Provar die sewe onderstokke wat geplant is, bespreek het en die primêre resultate rakende die gemiddelde gewigte van trosse en druiwe aangebied het.

Ons was bevoorreg om sewe borge vir die dag te kry, wat elkeen die geleentheid gekry het om hul besigheid en produkte aan te bied. Die borge sluit in Duikerfontein, Bloomfresh, Hexberg Kwekery, LNR Infruitec-Nietvoorbij, Bosman Adama, Voorgroenberg Kwekery en Noord-Kaap Water & Solar.

Die eerste van die sewe borge van die dag, Duikerfontein, het toe hul spreekbeurt gehad om te vertel wie hul is en wat hulle besigheid behels. Almal het toe na Letsatsi vertrek vir 'n heerlike buffet ontbyt, waarna die dag voortgesit is by Callie September se plaas Aqua Noir. Hier was Bloomfresh eerste aan die woord om te vertel oor hul nuwe droogdruif-kultivar, Sheegene28. Die eienskappe van die kultivar en wat dit uniek maak (baie vroeg en sterk muskaat geur op die gedroogde produk) is uitgelig. Die evaluerings kriteria en die verskillende tipes droogmetodes wat hul gebruik (sondroog, swael en dry-on-vine) om vas te stel watter een die beste aanbeveling moet wees vir die kultivar is ook bespreek.

Hexberg Kwekery het toe geleentheid gehad om oor hulself te vertel, waarna almal deur die Sheegene28 blok kon stap om die kultivar te bekyk, vrae te vra aan die tegniese span en van die kultivar se rosyntjies te proe, voordat hul by die blok waar die LNR se kultivars was, kon aansluit.



Dr Trevor Koopman en Andre Schmidt, van LNR Infruitec-Nietvoorbij het vertel oor die vier verskillende kultivars wat daar evalueer word, G4-4040, G6-5853, G3-5315 en G4-220. G4-4040 is die seleksie wat ook die muskaat geur in die rosyntjie behou. G6-5853 is die seleksie wat die twee weerstandbiedende gene teen witroes en donsksimmel bevat. G3-5315 is die verskriflik vrugbare seleksie met die groot los trosse en G4-220 is die die mooi skoon seleksie met die potensiaal om geswael te word.

Die volgende twee borge, Bosman Adama en Voorgroenberg Kwekery het toe hul spreekbeurt gehad om oor hul onderskeie maatskappye te vertel, voordat die kultivar toer voortgesit is na NJ Wiese boerdery. Hier het Kebo vertel oor die onderstokproef wat in 2019 aangeplant is. Meer van die ouer tipe onderstokke was by hierdie proefperseel ingesluit as die een by Dwarsdeur. Hierdie het ingesluit 143B Mgt, Paulsen 1103, Richter 110, Ruggeri 140, Ramsey en SO4 en die nuwes, Harmony, RS-3 en RS-9. By Dwarsdeur was die ouer tipes Paulsen 1103, Ramsey en die nuwes Freedom, GRN-2, GRN-4, Kingfisher en Minotaur. Die Dwarsdeur perseel het 'n leem tipe grond (buitegrond) en die NJ Wiese perseel het 'n kalkleem tipe grond.

Alhoewel daar nog geen betekenisvolle gevolgtrekkings by die Dwarsdeur perseel gemaak kon word nie (nog nie genoegsame data nie), kon daar wel by die NJ Wiese proef met die data wat gedeel was, gesien word dat RS-3 vir twee agtereenvolgende seisoene baie beter as die ander onderstokke in terme van drag presteer het.

Tydens die onderstokproef het Dr. Daniels deelnemers aangemoedig om ook die nabygeleë Sundowner-blok te ondersoek vir vergelyking met die volgende terrein, Bottervlei. NJ Wiese het kennis geneem van Sundowner se vermoë om vir 'n lang tydperk op die stok te bly, ondanks die aanraking van rosyne en reënerige toestande.



Die toer het na Bottervlei verskuif, waar Dr. Daniels die Sundowner-kultivar en sy kommersiële vrystellingsproses bespreek het. Vlam Taljaard, die DWPO-wyksvoorsitter, het Raisins SA bedank en Leon versoek om die plaas se verskillende kultivars aan te bied. Hierdie versoek het bywoners in staat gestel om die Summer Muscat, Diamond Muscat en Sugra39 te besigtig, almal naby geplant.

Die OL Velddagtoer is toe by Letsatsi afgesluit met 'n 'cool down' bier geborg deur Voorgroenberg Kwekery. Daar is toe nabetraging gedoen oor die dag en die konsensus was deur die bank dat die dag inderdaad 'n baie groot sukses was en dat meer sulke dae nodig is.

Ons wil graag elkeen wat die dag bygewoon het bedank, asook elke borg. Sonder julle sou die dag nie moontlik wees nie. Ons sien uit na die volgende velddagtoer wat in Junie 2025 sal plaasvind. ■



METOS® SA partnership protects a sweet treasure

By: Jeanne Van der Merwe, Villa Crop

South Africa's raisin industry punches above its weight in many respects.

As the sixth largest producer of raisins in the world, it contributes about 6% of the 1,3 million tonnes produced worldwide, according to statistics from Raisins SA.

The industry exports 86% of its product and represents 9% of raisin exports worldwide, with a total market share of 25% for golden raisins and 15,4% for Thompsons. However, these impressive statistics belie a considerable vulnerability. Of the more than 16 000 ha of dedicated raisin vineyards in the country, 88% is located in the Orange River Valley.

With vines being sensitive plants at the best of times, a single ill-timed weather incident can compromise much of the country's harvest, both in terms of yield size and quality.

"The Orange River Valley has unique climate challenges. The area receives summer rainfall with dry winters. Being located in a semi-arid region, it is prone to late-season frost, which is our biggest risk in spring," says Raisins SA senior agronomist Stefan Jordaan.

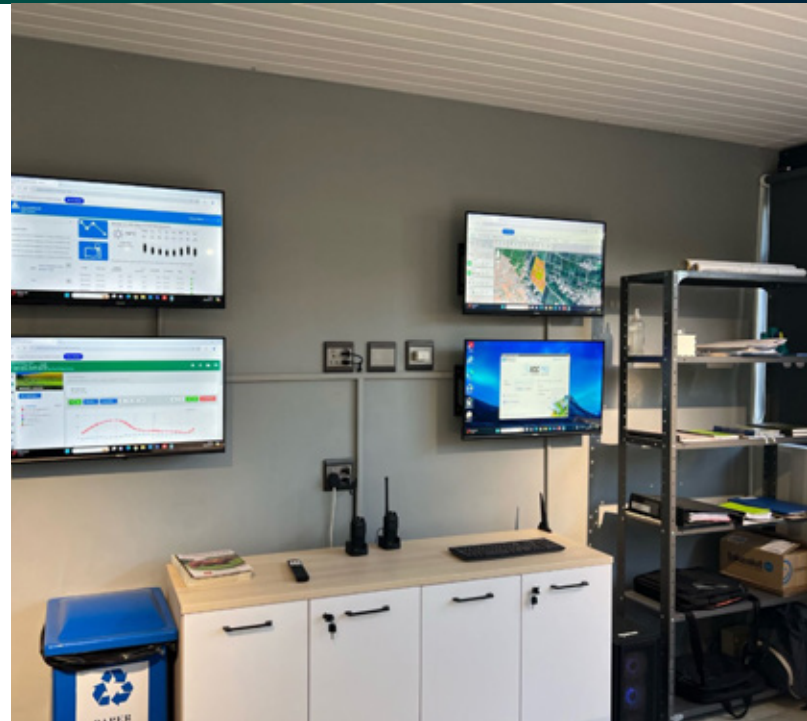


Figure 1

4 METOS Vine Academy

Screens in the Vine Academy and Model Farm training facility in Kakamas have a live feed to the FieldClimate app showing surrounding weather stations' data. Picture: Christo van der Rheede/LinkedIn



Vines are also very sensitive to fungal infections, so the summer rains combined with very hot conditions make them extremely susceptible to infections.



While little can be done to stop flooding of the vineyards during excessive rainfall upstream, producers can mitigate other risks – if they know what is coming. *“Frost risk increases exponentially when the night temperature drops below 4°C, but producers can position frost fans in the vineyards to keep the air circulating. It is also possible to spray preventatively against infections such as powdery and downy mildew, as well as botrytis, if conditions are favourable for disease development.”*

However, only two government-run weather stations are situated within the bigger region of the Northern Cape’s raisin production areas. Producers have long been aware of extreme climate variability within the production region; only a few kilometres north, south, upstream or downstream can make a huge difference in temperature, frost risk and other variables.

That is why Raisins SA championed a partnership with METOS®, the weather station and climate service provider, backed by climate- and disease modelling capabilities through the app FieldClimate and advanced long-term modelling through the international weather data processor Meteoblue.

METOS® SA is a subsidiary of WinField United SA, and currently has a network of about 632 remote weather stations. The Raisins SA network of METOS® SA weather stations numbers 14, of which three are in private ownership, but included in the network. The aim is to expand the Raisins SA network to 30.

The METOS® weather stations continuously record weather data, which is fed into the FieldClimate app, which in turn processes and interprets the data to do disease modelling, which can inform preventative measures.

The app provides a wide array of data, including spray windows, extreme heat and cold or frost warnings, as well as specific analyses for the various diseases to which the vines are susceptible, such as botrytis and various strains of downy and powdery mildew.

Well-supported and user-friendly

Given how crucial weather data is for an organisation like Raisins SA, reliability and client support are key in a weather monitoring programme.

“You can use any weather station to get the information you need; there are many excellent weather stations on the market. But without a reliable service and maintenance plan it means nothing,” says Jordaan. *“To us it’s important that METOS® has backup and service programmes in place, and that the weather stations themselves are manufactured according to an international standard, because that means you’ll always be able to obtain parts.”*



“It’s also very useful to us that you can incorporate the METOS® stations with soil moisture sensors.”

When a METOS® weather station goes offline, it can still record data for a number of days and store it locally. The METOS® SA target is to repair any broken weather station within 72 hours to maintain data collection continuity. METOS® SA is therefore working towards having technicians in place within 150 km from any of its weather stations.

The FieldClimate user interface is popular among growers.

“Let’s be honest, people are not all that fond of reading any more, so the way information is packaged on the FieldClimate app is appealing and user-friendly. You can also customise it according to your unique needs. For instance, you can programme it to warn you when rainfall of more than 5 mm is expected.” In a similar vein, the Raisins SA FieldClimate account is set to send a warning SMS to producers when the air temperature reaches 5°C, which is when frost becomes a risk.

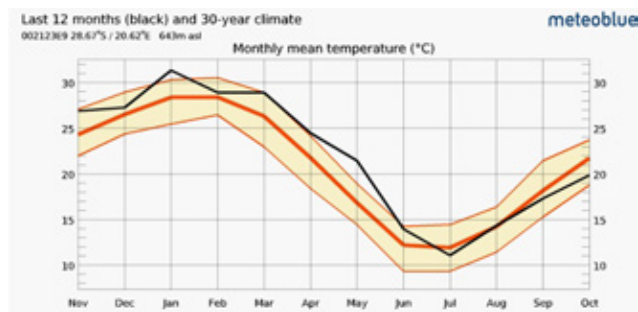


Figure 2

4-5 METOS paardeneiland mean 30 yr vs 12 months

This Meteoblue analysis shows how the past 12 months’ monthly mean temperature (the black line) differs from the 30-year mean. The data indicates significantly higher temperatures for much of the growing season.

Primed for the future

According to Rozanne Vos, business development manager at TerraClim, the climate partner which also ingests the METOS® SA weather station network’s data, the power of the METOS® SA weather station network lies in being able to provide tangible data points for identifying climate trends.

“This growing database allows TerraClim to consolidate historical data, compare past trends with current climate patterns, and develop and refine climate models.”

Previously, growers had to rely on satellite information for weather forecasts and interpolations, which are often designed along European or American conventions and can be quite temperamental.

“TerraClim can use the weather stations to make our data more accurate than ever on a micro-climatic level, which makes it better suited for local conditions. It gives us the ability to capture nuanced differences in climate conditions, even between opposite sides of a mountain.”

These capabilities are crucial for the future of the raisin industry. Long-term data on TerraClim already demonstrates variances between 30 year mean temperatures and more recent averages, which has implications for the selection of new cultivars.

Raisins SA is keen to harness the power of TerraClim to evaluate subtle differences in terroir between different weather station locations to find the locations that would best suit particular cultivars. It would also assist immensely with the evaluation of new cultivars.



By using climate data, the organisation is hoping to avoid problems such as those that occurred with the introduction of the new cultivar Selma Pete, an early-ripening, white seedless cultivar which performed extremely well in California, in regions with similar climatic conditions as South Africa's Orange River production area.



But then after a few years in production here, it turns out that Selma Pete is incredibly sensitive to cold, so in low-lying blocks the vines did not perform well and sustained damage.



Figure 3

4-5 METOS 7 days rain

The FieldClimate app shows the location of all the Raisins SA weather stations, and can instantly give an overview of a number of climate parameters over the entire Lower Orange River production region.

Learning from the wine industry

Jordaan says the raisin industry is starting to appreciate the importance of terroir, which is one of the cornerstones of viticulture and winemaking.

“Just as you don’t plant Sauvignon blanc in your lowest-lying vineyard, because it’s an early cultivar, raisin grape farmers must also become more sensitive to how altitude, soil type and other factors impact the development of the grape.”

Jordaan is excited about the future of METOS® SA and Raisins SA.

The system’s forecasting ability is growing, and as users become more familiar with the system, it becomes easier to interpret the FieldClimate summaries, to the point that the organisation’s members are beginning to make findings similar to specialist weather forecasters.



It is already an integral part of our members’ daily farming activities, and there is considerable potential for strategic insights to give us a competitive edge. ■





Weerverslag Kwartaal 4

Deur: Stacey Flemming, Raisins SA

Suid-Afrika se rosyntjiedruifstreke, veral die Noord-Kaap se Oranjerivervallei en die Wes-Kaapse Olifantsrivervallei, ervaar gunstige toestande vir die 2024-seisoen. Onlangse weer is gekenmerk deur goed verspreide reënval en optimale sonlig, wat 'n ideale omgewing vir druiwegroei skep.



HUIDIGE KLIMAAT:

Die streek trek voordeel uit 'n warm, droë woestynklimaat, ideaal vir druiwerypwording. Goed verspreide reënval vroeër in die seisoen en oorvloedige sonlig het bygedra tot sterk wingerdontwikkeling en suikerophoping.

TEMPERATUUR PATRONE:

Temperature het optimaal gebly, met sonnige dae en lae humiditeit. Hierdie toestande verbeter die kwaliteit en konsekwentheid van rosyne, terwyl die risiko's van siektes soos donsskimmel verminder word.

OES EN VERWERKING VOORUITSIGTE:

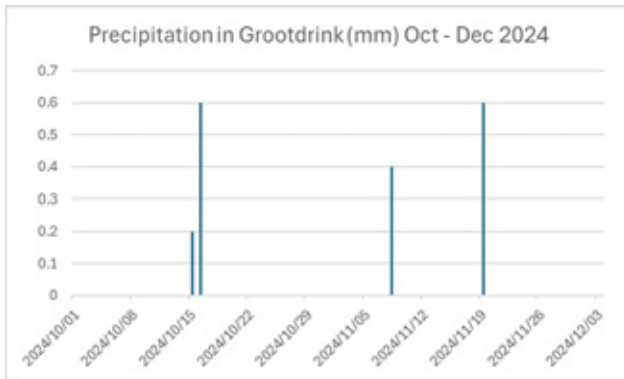
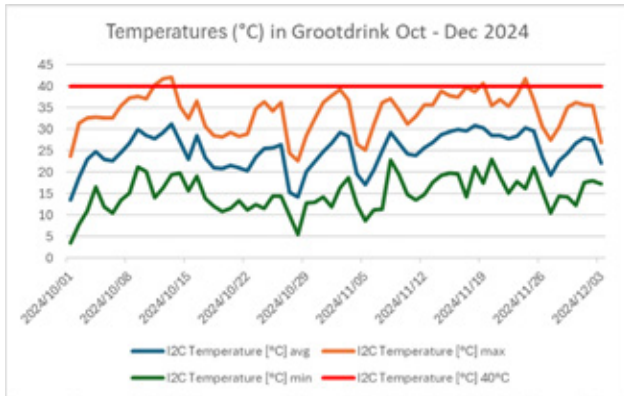
Gunstige weer kan die rypwordingsproses versnel, wat lei tot 'n vroeë begin van die oesseisoen. Dit stel boere in staat om droogfasiliteite doeltreffend te benut vir die verhoogde oesvolume wat vanjaar geprojekteer word.

PLAAG- EN SIEKTEBESTUUR:

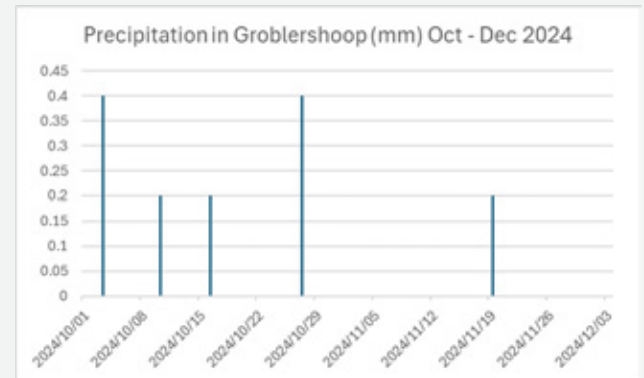
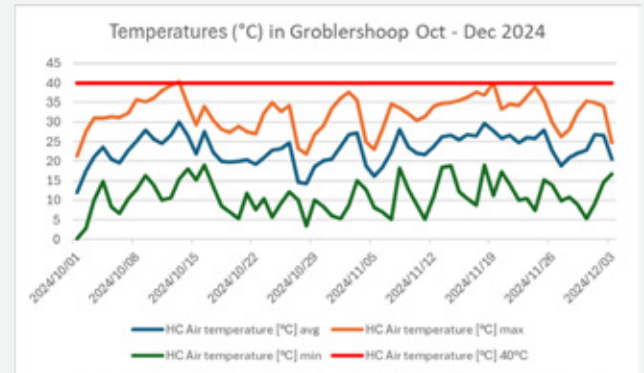
Die warm, droë klimaat verminder natuurlik die risiko van swaminfeksies wat algemeen in natter gebiede voorkom. Nietemin bly proaktiewe maatreëls soos swamdoderwisselbou en net 'n integrale deel van die handhawing van gewasgesondheid en opbrengs. Hierdie toestande belooft gesamentlik 'n robuuste oes vir die 2025-seisoen, met verbeterde rosyntjiekwaliteit en opbrengs. Producenten moet voortgaan om die weer te monitor en besproeiingstelsels te benut om die seisoen se potensiaal te maksimeer.



Grootdrink

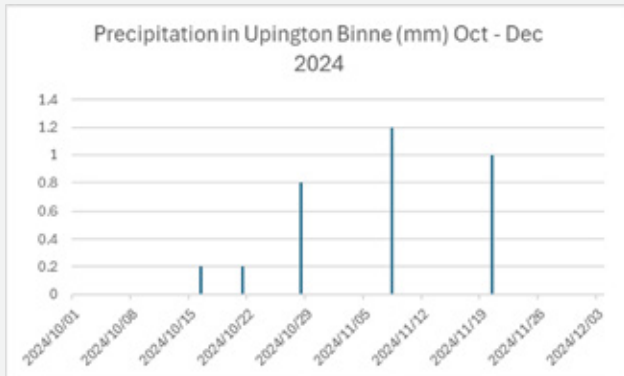
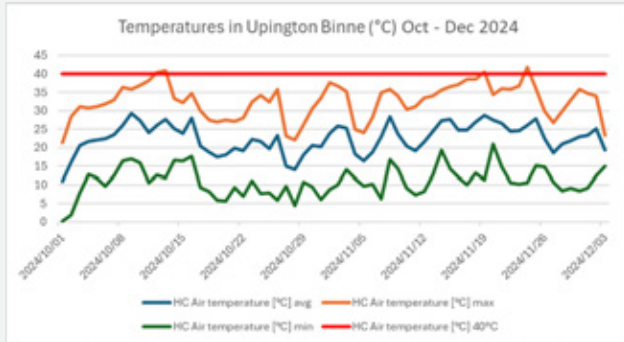


Groblershoop

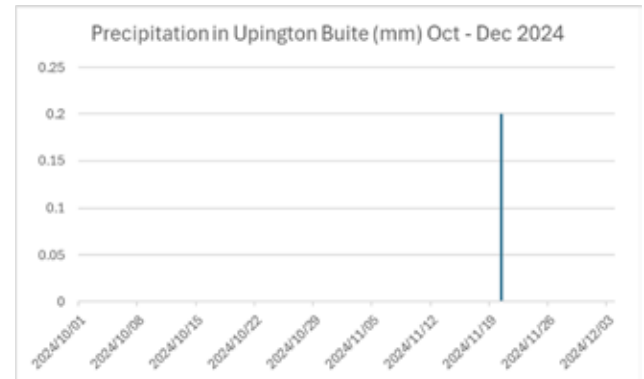
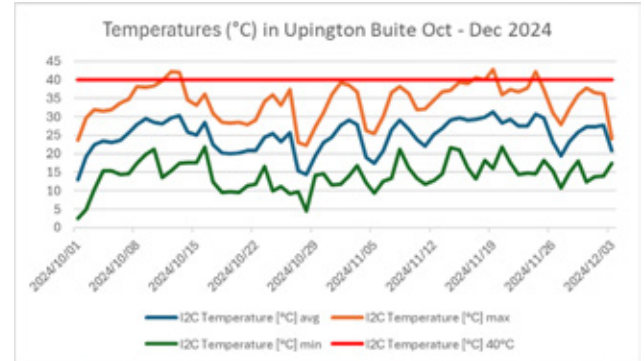




Upington binne

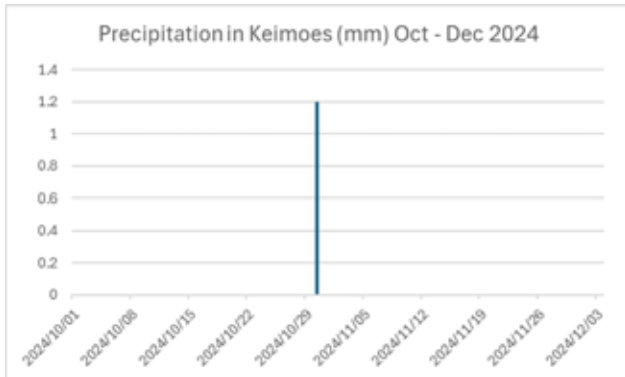
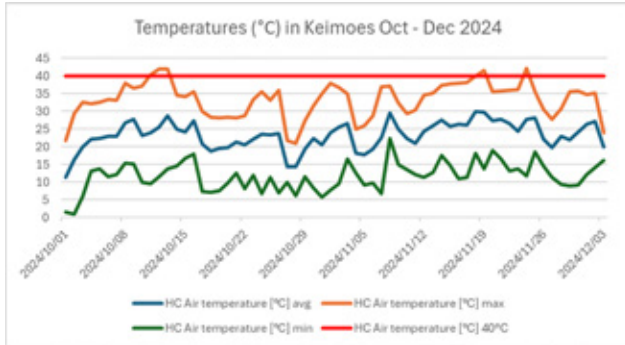


Upington buite

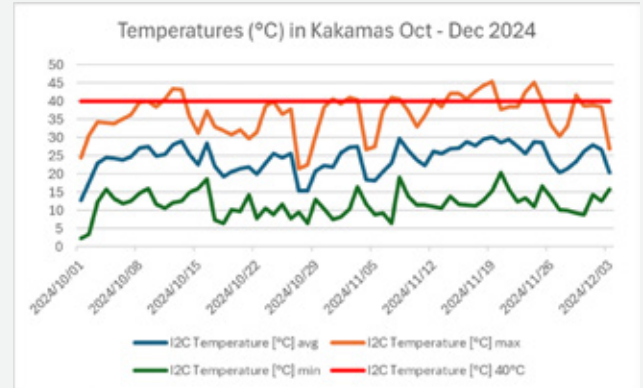




Keimoes

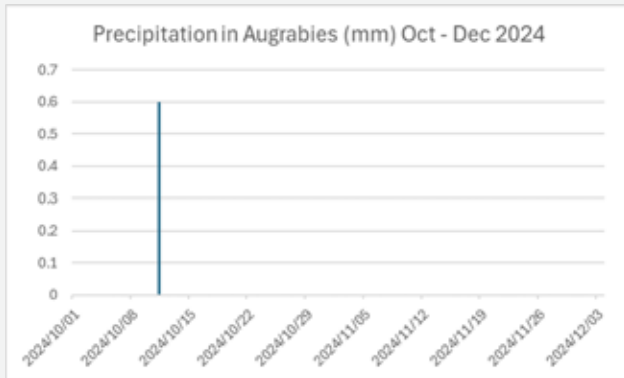
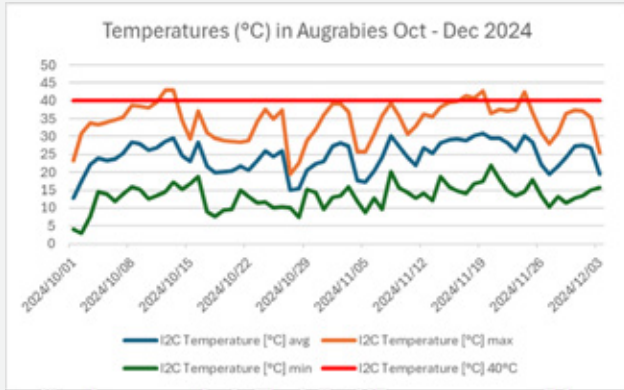


Kakamas

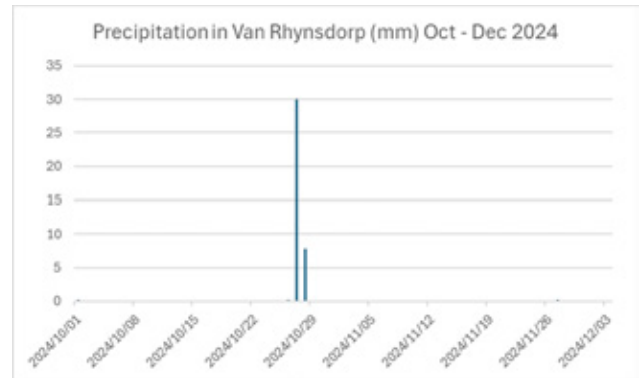
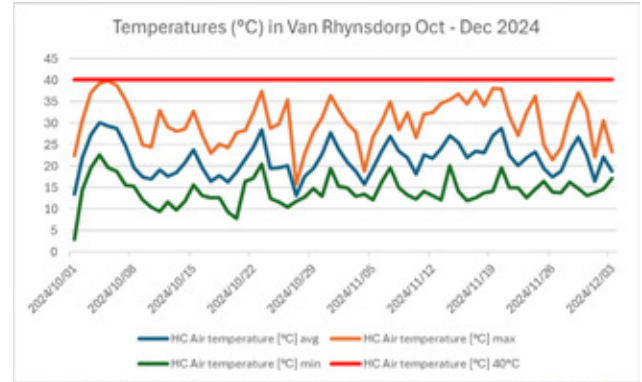




Augrabies

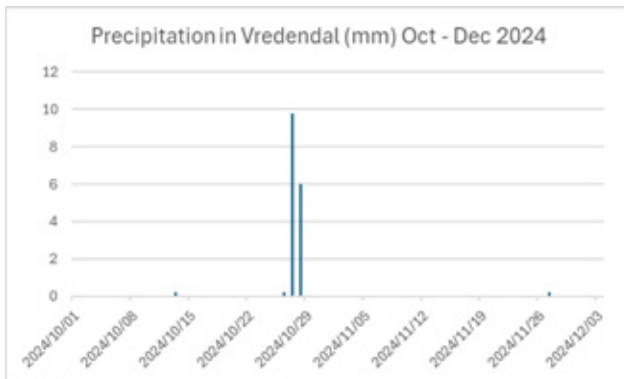
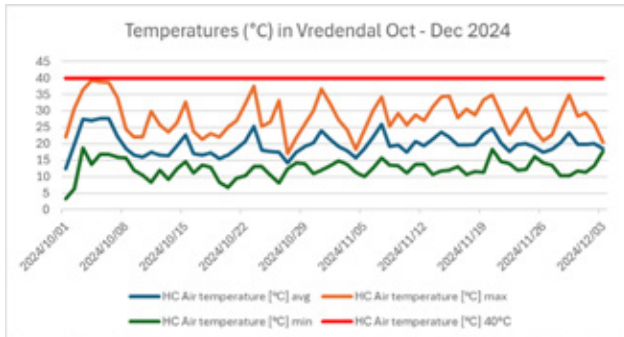


Vanrynsdorp





Vredendal





Algemene Seisoen Oorsig

Deur: Stefan Jordaan, Raisins SA

Tans word gunstige oeste in albei die primêre rosyntjieproduserende streke verwag. Vroeë aanduidings van tafeldruive dui daarop dat die oesseisoen van agt dae verskuif het om in lyn te wees met die tydlyne van die 2024-oes, met sommige gevalle wat selfs vroeër voorgekom het.

'n Soortgelyke neiging word waargeneem in droë druive, waar vroeë kultivars hul seisoen later as verwag begin het; die meeste Selma Pete-druive is egter reeds vroeg geoes. Dit is opmerklik dat gewigte in beide gebiede effens ligter kan wees as dié van die vorige seisoen.

Namate jonger wingerde toenemend in produksie kom, is hierdie seisoen gereed om Suid-Afrika se eerste rosyntoen-oes van meer as 100 000 ton op te lewer. Alhoewel daar 'n jaar-tot-jaar afname in Sultana-produksie was, was daar noemenswaardige toenames in Merbein Seedless-, Selma Pete- en Sugra39-variëteite. Hierdie verskuiwing dra by tot 'n meer stabiele oesopbrengs en 'n styging in gemiddelde oesvolumes.

ORANJERIVIER

Oor die algemeen vertoon die blokke bevredigende toestande, met die meeste gesonde vegetatiewe groei. Daar is egter gevalle van groeistilstand simptome wat sekere blokke aansienlik kan beïnvloed. Dit kan toegeskryf word aan die swaar oesladings van die vorige seisoen, wat moontlik lei tot verminderde reserwevlakke in spesifieke gebiede. Dit is uitdagend om 'n enkele oorsaak vir hierdie kwessies vas te stel.

Vanjaar se blomperiode was besonder stresvol, aangesien byna elke streek tydens blomtyd deur 'n hittegolf geraak is, wat die kultivars wat gedurende hierdie tydperk gebloom het, beïnvloed het. Hierdie effek is veral duidelik in die droog-op-die-stok-toetsblok by Raisins SA, waar drie kultivars teenwoordig is, wat die ongunstige toestande duidelik illustreer.

As ons vorentoe kyk, verwag ons drie vrugtevliespate in die komende seisoen. 93% van die plase is reeds gekarteer en dus nou op die AridEco program:

Week 1, 3, 5: Uppington rivier af
Week 2, 4, 6: Uppington rivier op



OLIFANSTRIVIER

Hierdie seisoen is die derde agtereenvolgende jaar dat die Olifantsrivier laer watervlakke gedurende die groeiseisoen ervaar het, wat hoofsaaklik die plaaslike wyndruifproduksie beïnvloed. Die gevolglike skade strek verder as die onmiddellike impak op druiwe, wat die algehele landbou-produksie van die streek beïnvloed. Boonop hou donsskimmel 'n beduidende risiko in die Vredendal-blokke in, wat proaktiewe maatreëls van produsente noodsaak.

Ten spyte van hierdie uitdagings lyk toestande hierdie seisoen gunstig, met gemiddelde tot bogemiddelde oeste wat in beide streke verwag word.

Boonop het die gebied reeds sy eerste gebiedsweye vrugtevliegbeheerinisiatief geïmplementeer, wat lugbespuiting insluit. Hierdie samewerkingsspoging tussen produsente sal na verwagting beheermaatreëls verbeter en aansienlik verbeterde resultate lewer.

ALGEMENE OORSIG

Die huidige seisoen lyk belowend. Vanuit 'n produsent se perspektief is verskeie sleutelpraktyke noodsaaklik om optimale toestande van nou af tot oes te verseker:

- Implementeer 'n effektiewe swambestuursprogram saam met volhoubare residubestuur.
- Prioritiseer besproeiing, aangesien dit van kritieke belang is vir gewasgesondheid.
- Handhaaf dekgewasse op 'n kort, plat hoogte om optimale lugvloei te vergemaklik.
- Maak seker dat wingerde oop bly om voldoende ligblootstelling en deurlugting te bevorder.
- Die kwaliteit van rosyne hou nou verband met behoorlike suikerophoping (gemeet in Brix). Dit is noodsaaklik om die optimale suikervlakke te bereik vir die spesifieke droogmetode wat tydens oes gebruik word. ■





Kultivar Proewe Opedag

Merk die datum

22 Januarie 2025

16:00 - 19:00

Plek:

Vine Academy and Model Farm
Kakamas



— UITNODIGING —



U word hiermee hartlik uitgenooi na 'n Kultivar Proewe Opedag op 22 Januarie 2025 by die Vine Academy and Model Farm in Kakamas.

Die doel van hierdie dag is om inligting met u te deel rakende proewe:

1

Waar Selma Pete op verskillende onderstokke (ou bekendes en nuwes) evalueer word.

2

Verskillende LNR Kultivars met goeie potensiaal op verskillende onderstokke evalueer word.

U sal dus eerstehands direk vanaf die Navorsing, Ontwikkeling en Innovasie Span kan hoor wat hul ervaring met die kultivars tot op hede was en watter vooruitsigte hulle daarin sien.

Daar sal drie sessies van elk een uur lank op hierdie dag wees, u kan by enige van hierdie sessies aansluit:

16:00 -17:00

17:00 -18:00

18:00 - 19:00



Marktoegang, -intelligensie & -ontwikkeling



VK besoek Oktober 2024

Deur: Madene Conradie, Raisins SA

Gedurende 13-18 Oktober 2024 het 'n delegasie vanaf Suid-Afrika die klein dorpie Stamford in die VK besoek.

Vir die week se bewegings was dit die mees sentraalste ligging. Die besoek was afgelê om die dinamika van die VK mark te verstaan, en om die toekoms vir SA rosyne daar te ondersoek. Die afgelope vyf jaar spandeer Raisins SA fondse aan generiese bemerking, om die vraag na rosyne te stimuleer en so 'n afset vir ons produk te kry.

Die VK is die grootste invoerder van rosyne, met ongeveer 100 000 ton wat jaarliks ingevoer word. Die produk word hoofsaaklik in gebak gebruik (industriële sektor), dus word die beste moontlike produk teen die laagste koste benodig, om te verseker die produk is veilig om te eet, asook winsgewend. 'n Kleiner gedeelte van die invoere vir rosyne word vir snacking gebruik, wat 'n groeiende kategorie is.





Die volgende persone was deel van die delegasie:

- John Valentine, Red Communications
- David van der Merwe, Raisins SA direksie voorsitter
- Van Zyl Vorster, Raisins SA direksie ondervoorsitter
- Madene Conradie, Raisins SA Inligting & Kommunikasiebestuurder
- Nico Koch, PepsiCo
- Dawid van der Berg, Carpe Diem Raisins
- Peter Kuilman, RedSun Raisins
- Stephan Kruger, Prosperitas Foods

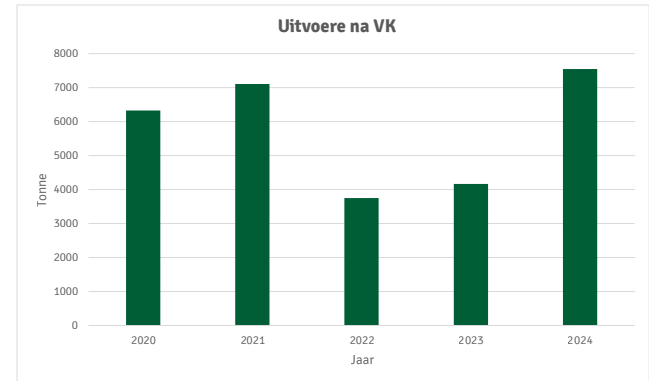
Die week het fabriek- en kliëntbesoeke ingesluit, met een dag wat gevul was met een-tot-een vergaderings met aankopers. Dit het baie tyd en logistieke reëlings gespaar, met al die aankopers wat die verpakkers op een plek ontmoet het, in verskeie areas.

Goeie gesprekke was gehou, en die uiteinde was dat die beste produk rosyne in SA gegroei word, deur die beste produsente. 'n Paar wenke voortspruitend uit die besoek:

- SA se produk word as die veiligste ter wêreld beskou.
- Capstems is 'n probleem, wat moontlik deur 'n laer vog by inname aangespreek kan word.
- Die tydsduur van produk wat bestel is vanaf SA is ongeveer agt weke, in vergelyking met twee weke vanaf Turkye.

Die gevolgtrekking is gemaak dat daar na die volgende jaar se uitvoere gekyk sal word, en dan besluit word of die promosie in die VK voortgesit sal word, of ander markte eerder ondersoek moet word. ■

Die uitvoere na die VK vanaf SA oor die afgelope vyf jaar:





Amptelike Oesskatting vir 2024/25

Deur: Dr Ferdie Botha, Raisins SA

Soos ons die oesseisoen in die Suidelike-halfrond nader, is ons verheug om ons oesskatting vir die 2024/25-seisoen te deel.

Die vroeë oes sal in Januarie 2025 begin, met piek-lewerings by verwerkers wat in Maart verwag word en afneem in April 2025. Ons wingerde is in uitstekende toestand en toon 'n belowende oes. Ten spyte van 'n mate van temperatuurvariasie gedurende die lente, het toestande gestabiliseer en die vooruitsigte vir 'n goeie oes is daar.

Vir die 2023/24-seisoen was ons verpakkers se totale inname 96,000 ton. Van Januarie 2024 tot Oktober 2024 het uitvoere 71,000 ton bereik. Gevolglik verwag ons minimale of eerder geen oordragvoorraad na die volgende bemarkingseisoen nie. Die amptelike rou-materiaal skatting vir Raisins SA word beraam op 104,000 ton vir die 2024/25-oes, wat 'n bemerkbare oes van 93,000 ton vir die komende seisoen bied.



Hierdie voorspelling neem aan dat gunstige weersomstandighede gedurende die oes- en droogperiode van Januarie tot April sal heers. Raisins SA sal voortaan oesopdaterings verskaf soos volumes in die nuwe jaar realiseer.

Dankie vir u volgehoue ondersteuning. ■



Benefits of implementing sustainability in farming

By: Shireen Moodley, Senior Analyst for Agri Business at Standard Bank

On a global front, financial, social and environmental constraints have been on the rise.

This stems from the need of sustainable development driven by issues relating to food, water and energy security as well as environmental degradation and climate change. As a member state of the United Nations (UN), South Africa is committed to achieving the 2030 Agenda Sustainable Development Goals. To achieve these goals, there has been a shift away from a traditional economy towards a green economy.

By definition, a green economy is low carbon, resource efficient and socially inclusive. In a green economy, growth in employment and income are driven by public and private investment into such economic activities, infrastructure and assets that allow reduced carbon emissions and pollution, enhanced energy and resource efficiency, and prevention of the loss of biodiversity and ecosystem services (UNEP, 2010).

While South Africa has undertaken the principle of a green economy, the agricultural sector was identified as one of the sectors that can be a key catalyst to kickstart this green economy.



Sources:

*7th Edition, Standard Bank Finance and Farm Management
Standard Bank Group
United Nations Environment Programme www.unep.org*



This can be done by applying production methods such as organic and regenerative agriculture, adhering to environmental policies and transitioning to climate-smart financing. These production methods, adherence and transitions stand to benefit all value-chain players.

A production method such as organic farming has economic benefits that fall into three categories. Direct commercial benefits from higher profitability as a result of lower costs or higher income; reduced external costs and production of public benefits as organic agriculture produces ecosystem services such as biodiversity conservation.

Although the main aim of regenerative agriculture is to increase soil organic matter levels, this yields a number of benefits including increased resilience to extreme weather events, decline in soil-related diseases, increased efficiency in soil water holding capacity and the overall abundance in the bioavailability of nutrients for all life forms.

The adoption of smart farming and precision agricultural methods allow farmers to adhere to environmental policies such as the National Environment Management Act 107 of 1998 (NEMA). This also gives farmers a competitive advantage in accessing overseas markets. For example, by reducing the use of chemicals via smart farming and precision agricultural methods, there is an increase in compliance with the European Union's requirements regarding their Farm to Fork Strategy and the Green Deal.

Climate-smart financing has been on the rise. This is critical as large-scale investments are required to significantly reduce and offset emissions, predominantly in sectors such as agriculture, that emit large amounts of greenhouse gases (GHG).

Climate-smart finance is also vital because it serve as one of the adaptation actions toward climate change as it allows for the adaptation to the adverse effects and reduces the negative impacts.

Standard Bank is driven by our belief that the financial services sector must play a leadership role in addressing the climate crisis facing the world today and this can be traced back to 2018 when we adopted social, economic and environmental (SEE) impact as a strategic value driver. Over the past six years, we have worked actively to build a climate strategy to manage climate risk and opportunity. Homing in on the agricultural sector, our way of thinking and accessing the sector has been altered since then.

As we all know that the agricultural sector is a notable contributor to GHG as well as a sink for GHG, we aim to continue our support to the agriculture sector, while helping our clients to manage their emissions through sustainable agriculture practices such as: farming systems that conserve land, water, and biological resources, do not degrade the environment, and are technologically appropriate, economically viable and socially acceptable).

We are working with clients to enable implementation of climate-smart agriculture, which includes smart energy such as solar and biomass, smart water such as drip irrigation, shade netting and greenhouses, smart equipment such as no till and precision farming equipment and smart practices such as regenerative agriculture, conservation agriculture and drought resistant cultivars. ■



Standard Bank
Business & Commercial

THERE'S
BUSINESS
LOANS

THEN THERE'S
TAILOR-MADE FINANCING
TO SUIT YOUR AGRIBUSINESS NEEDS

[Q | Standard Bank Commercial Asset Finance](#)

Ts&Cs apply. Authorised financial services and registered credit provider (NCRCP15). The Standard Bank of South Africa Limited (Reg. No. 1962/000738/06).

Dried Fruit South Africa (DFSA)

By: Wilechia van der Westhuizen, Hortgro

Dried Fruit South Africa is an industry alliance formed in 2019 to champion the interests of our sector in South Africa and to promote the benefits of all types of dried fruit. Because we believe our consumers deserve to know about and enjoy dried fruit's wholesome goodness.



The objective of the marketing development campaign is to create top of mind awareness for DFSA dried fruit and introduce more consumers to the category. We will be able to do this by educating the consumer on the key properties of dried fruit and how these are of benefit to them in relation to their daily lives.

The campaign also aims to motivate the purchase of DFSA specific products over that of competitors, by communicating that the DFSA range of products represent the highest quality of dried fruit in South Africa.



The key criteria of the campaign is to dictate the campaign imagery, content and messaging in order to resonate with the desired audience. To identify the key target audience which based on data is women aged 30-45, typically the primary household shopper who is motivated to buy the product for both themselves and their families. The campaign focuses specifically on promoting the goodness of dried fruit relevant to the consumer's needs. The benefits of dried fruit are highlighted. Website development is also used as a more consumer centric tool that assists in promoting the benefits of dried fruit and the quality of the products that DFSA represents.

- Expand the themes featured on the website into social media, in-store, print and email content. This creates a necessary link between what the consumer sees either in the retail environment or on their phone and the website itself. Consistently drive consumers to a single website address.
- Efficiently capture and analyse consumer information and data.
- Accurately measure engagement and the success of competitions/promotions.
- Create brand consistency throughout all platforms. (digital, print, social) .
- Keep the website relevant by updating/adding content that aligns with specific seasonal events, activities, and sponsorships as and when needed. (Back to school, Christmas) ■

The competition element will also be used to promote engagement and drive traffic to the website. A competition element will be included in the campaign where the prize on offer links directly to one or more of the consumer benefits. Other methods used to drive awareness include social media (paid and organic), email marketing, programmatic ads (Google), banner advertising on retailers platforms, in-store POS and print media.

For more information, please visit



www.driedfruitsa.co.za





Transformasie

Raisins SA is offering 5 applicants, 50%



Merit Bursaries

Diploma in Plant Production: NQF 5

Wine Grapes, Table Grapes and Raisin Production

About us

We believe in the power of education to transform lives. Our scholarship aims to support an bright mind who are committed to making a positive impact through learning. Get in touch with us and apply for our Scholarship Program.

Bursary Selection Criteria

- Matric Certificate required as a minimum qualification
- Applicant must have a passion for viticulture

The application deadline is 31 December 2024.

✉ andriesd@raisinsa.co.za

Raisins

South Africa



7th Annual 'Girl, You Know I Matter' Women's Retreat

By: Simone Oliphant, Raisins SA



I would like to extend our heartfelt gratitude for your generous donation of products to our 7th annual Girl! You Know I Matter Women's Retreat, Western Cape 2024. Your sponsorship was instrumental in creating a delicious, tasty and energising experience for all attendees.



Natalie Abrahams,

Executive Director – I Matter Founder & Host –
GYKIM Women's Retreat



This year's retreat brought together 34 women from diverse backgrounds, fostering a spirit of community, growth, and inspiration.





Raisins SA provided a special treat in the goody bags for the women to take home and enjoy. The retreat is hosted at rotating venues annually. The aim is create inter-cultural experiences and encourage local tourism. Since inception in 2018, they have hosted the retreat in 7 South African provinces and 1 international destination.

Their theme for 2024 was “Repositioned” and the women gave testimony of how they have been repositioned to pursue their purpose. The women enjoyed empowering and educational sessions unpacking issues women face daily. They have enjoyed themed dinners, city tours exploring the beauty, history and culture of Cape town and spend many moments reflecting on self-awareness and healing. ■

A year in review - Scatec Bursary Program

By: Desiree Adams (VAMF) and
Dr Andries Daniels (Raisins SA)

As we draw closer to the end of the year, a lot has happened for the Hoërskool Martin Oosthuizen (HMO) Scatec bursary holding learners.

Some of these are marking significant milestones for the learners as the Grade 12's has officially commenced with their National Senior Certificate examinations and is embarking on their final journey towards adulthood. This is a crucial time for these learners to showcase all the knowledge and skills that they have gained throughout not only this year, but basically their entire school career. The examination period is filled with both anticipation and immense pressure as these learners work hard to finish strong and achieve their academic goals.

The annual Matric Farewell of HMO also took place during October and was such a memorable and significant event. It symbolized the culmination of years of hard work and dedication, of friendships and relationships formed and so much more than what words could possibly describe.



It was a celebration of achievements and an amazing end to a never-to-be-repeated-again journey for the matric learners in their final year of school. It served as a beautiful transition into the next chapter of their lives, whether that leads to further studies, career opportunities, internships or other personal goals. The support from parents and the school's faculty underscored the strong community spirit at HMO. As the learners move forward, they carry with them cherished memories and valuable lessons that will guide them in their future endeavours.



The final term for the current Grade 11 learners is just as critical especially for the ones already envisioning tertiary studies as the marks they obtain now will determine their eligibility for further education at an institution of their choice. This final stretch of the academic year for all the Scatec bursary learners was, therefore, a critical time for the collaboration between the Vine Academy and Model Farm (VAMF) and HMO to provide the necessary support these learners were so in need of.

It presented an excellent opportunity whereby learners could come and make use of the available resources and support systems at the VAMF for them to enhance their study habits and prepare effectively for their final exams.

Learners could then approach their exams with confidence without having to face any challenges that they might have had when they were in their own environment and left to their own devices.

The learners that may have had problems to report to the VAMF for study time because they live outside of Kakamas (Augrabies, Marchand and Lutzburg) and are dependent on public transport were accommodated in the residence of the VAMF for the period of the matric examinations that started on 21 October and ended on 27 November 2024. The support that the VAMF provided during this time was a testament of its commitment to ensure the academic success of the HMO learners in their exams and the betterment of the communities that it aims to serve.



Another thoughtful display as a token of the VAMF's support and encouragement towards the success of the Scatec bursary learners was providing each learner with a study gift pack on the last day that the matriculants walked out of school and rang the school's bell. This gesture was aimed at wishing them well as they prepare for their exams and continue with their academic journey. It was a small yet meaningful way to show that every learner is supported in any type of way possible and that they should never have to face any challenges alone.



Another highlight of the year for the Scatec bursary program learners was the educational school trip they embarked on to the Western Cape. Here they visited Stellenbosch University, Elsenburg Agricultural Training Institution, the Cape Peninsula University of Technology, as well as the Agricultural Research Council (ARC) at Infruitec-Nietvoorbij in Stellenbosch.

The main aim of this trip was to give them a first-hand experience of the different agricultural institutions that are available where they can go and study in various fields under the agriculture umbrella.



Also, what the feel and look of these institutions are like, and what the requirements are to go and study there. So, this year has really been one of growth, learning, and discovery. From the early challenges of the year to the celebratory moments like the Matric Farewell, each learner has shown incredible resilience and determination. So as the year wraps up, it may be ending, but for these learners, it's just the beginning of a new and exciting chapter filled with so much potential. We are confident that with the continued support from Scatec and the VAMF, they will continue to thrive and succeed in all their future endeavours.

*Here's to a successful end of the year
and a bright future ahead for all
Scatec bursary learners. ■*

NAFU allocates funds to support maize plantation

By: Simone Oliphant, Raisins SA

The National African Farmers Union in the Northern Cape (NAFU-NC) is an independent, non-governmental, voluntary organization representing farmers in the Northern Cape.

The main aim of the union is to facilitate entry of black farmers into the mainstream agriculture, lobbying government for the creation of a conducive policy environment and to assist farmers to access land, information and other resources

This year NAFU yet again gave industry funds to plant 50ha maize to the value of R800 000. This project is aligned to the mandate of Raisins SA's transformation portfolio and supplement our mandate on enterprise and skills development. Our objective is to use these maize and lucerne plantings as rotational crop, serving multiple purposes. The first, to transfer skills and gain knowledge on a rotational crop system, to supplement financial position to emerging growers from earning a net income from such initiative and to serve to support NAFU's fodder bank initiative indirectly supporting socio-economic development of needy farmers.



Raisins SA would like to applaud NAFU for continued partnership with industry. ■



Raisins SA Transformation Overview

By: Bonani Nyhodo, NAMC



The Raisins South Africa is among the sectors that deserve praise for their dedication to change.

In Kakamas, Northern Cape, the Vine Academy and Model Farm was established because of the industry's resource mobilization campaign. The industry's collaboration with Pepsico's Kgodiso Trust made this feasible. The National Agricultural Marketing Council (NAMC) had to be consulted for Raisins South Africa to finalize the partnership, which was done and accommodated.

The industry received an inflow of R50 million as a result. Ground breaking irrigation innovation trials are underway at the Vine Academy and Model Farm. Fascinatingly, what was originally envisioned as a component of the industry transformation is now prevalent throughout the business, even reaching the wine and table grape sectors.

For the last touch Raisins South Africa and the First Rand Empowerment Foundation have partnered to increase the amount of land planted by black farmers by at least one hundred hectares over the course of the next five years. The direction that Raisins South Africa is pursuing with its transformation push is excellent, based on my observation of the early phases of this project. It was made clear to the open-minded colleague that technological assistance can raise these farmers' quality and, consequently, their financial standing. ■



Fruit Attraction, Spain Trip

By: Asanda Magwebu, Agricultural Extension Practitioner, ZF Mgcawu District

We were fortunate enough to have the opportunity of going to Spain. This was all made possible by the Raisins SA team. The trip consisted of four women: Three government officials as well as a female farmer.

Amongst many other exciting adventures we experienced, the highlight, as well as the main intention of the trip was to attend the 2024 Fruit attraction in Madrid, Spain.

There were more than 50 countries represented as well as more than 2000 exhibitors present. The fruit attraction exposed and simultaneously inspired us to the following:

- The global marketing of fresh produce.
- The connecting of professionals along the entire value chain, thus increasing chances of collaboration and making it possible for products to reach areas within the globe, they never would've reached otherwise.
- A competitive market where innovation as well as quality are at the core of the products produced.
- Work ethic and knowledge to inspire clients (farmers), in our case as government officials, on how to get your farmers to grow and produce quality at a global scale.
- Representation of women as exhibitors from different countries also made a massive impact and motivation that we too, can reach said heights.

If anything, the Fruit Attraction was an eye opener to the possibilities out there. It has drastically cut the hurdles that have been posed before women, especially in a high intensive industry such as agriculture. Majority of us come from small towns where the goal of agriculture is to ensure the survival of families.

This experience has shown that agriculture not only is a mode of survival, but that you can build an entire brand out of it and share whatever knowledge/product you have with the world because there is enough space in the world for all our dreams and ideas. We just have to develop a work ethic that will lead to success. ■



NAMC Chairperson Visits Raisin Industry

*By: Dr Andries Daniels and Simone
Oliphant, Raisins SA*

*A first for the Industry, Raisins SA was truly
honoured to host the chairperson of the
NAMC and his team.*



Raisins SA has always deemed it very important to build a good relationship with the Agricultural Marketing Council as its regulator. Continued advice and guidance was always welcomed by the Transformation portfolio with the NAMC.

The Raisin Industry has always been in the driver's seat when it comes to transformation, always exceeding the 20% required spent by the NAMC. The portfolio has grown and increased over the last six years and the NAMC boldly applauds the industry. The team consisted of the NAMC Chairperson Mr Angelo Petersen, Mr Bonani Nyhodo, Mr Khaya Sotsha as well as two extension officers from the department of Agriculture. This visit also included a comprehensive tour of various projects related to the raisin industry, showcasing the diverse agricultural efforts in the region on the second. On 14th November, the chairperson of the NAMC engaged with the students of the Vine Academy and Model Farm, discussing their educational journey and how the Academy is fostering the next generation of agricultural professionals.

This engagement provided a platform for students to learn from industry experts and gain valuable insights into the practical side of agriculture. Mr Petersen motivated the students by sharing the importance of their educational journey. He also encouraged the students to pursue their studies in agriculture with dedication, as the agricultural sector is crucial to the nation's economy and food security. He highlighted how important it is in agriculture to connect the dots, the importance of young people coming into the industry as well as the critical role that farmer associations play. He said a town without a farmer association is a failed town because they can drive municipalities to do things by being involved. He emphasised that we need to take hands to take the industry forward and that we must start with youth and youth development.

Mr Bonani Nyhodo from the NAMC then gave a presentation on the NAMC and its role within the agricultural sector. The presentation provided valuable insights into the mission, objectives, and responsibilities of the NAMC, a pivotal organization in promoting and facilitating agricultural marketing in South Africa. He explained the scope of the NAMC's operations, which include guiding agricultural policy, supporting producers, and ensuring fair market access for agricultural products. The presentation emphasized the council's commitment to sustainable agricultural development, market access for emerging farmers, and innovative strategies for boosting the agricultural industry, particularly within the context of export markets like those for raisins. The presentation served as both an educational and inspirational moment, helping the students to understand the real-world impact of their studies and the opportunities available within the agricultural industry.



By highlighting the interconnectedness of education, agriculture, and marketing, the NAMC team aimed to inspire the students to embrace their studies with a deeper sense of purpose, equipping them to contribute meaningfully to the growth and success of the agricultural sector.

His expertise in farm management, sustainable farming techniques, and the challenges faced in the industry. The team had the chance to observe various agricultural processes in action, including irrigation, crop management, and other aspects of vineyard and model farm operations.



Through this tour, they were able to engage in meaningful discussions about the future of agricultural education and how the VAMF can contribute to the development of skilled agricultural professionals. This hands-on tour was a key component of the visit, reinforcing the educational impact of the Vine Academy and its Model Farm as a training ground for future agricultural leaders, entrepreneurs, farm owners and innovators.

The visit also included a site tour of several Raisins SA projects, which allowed the team to explore various farms and facilities that are integral to the raisin production process. These included: Vaalhoek Vroue Boerdery, Ghoemas, Eksteenskuil Farm, EW Loxton Drying Facility, Eksteenskuil Cooperative and Kleinboere Company. The first farm visited was at Vaalhoek Vroue Boerdery in Farmsand, which is part of the FREF project. Here Bonani and Khaya was received by Rebecca Mouton from Vaalhoek Vroue Boerdery team on their farm. They are currently busy preparing the land for future planting, particularly for crop rotation. This is a crucial step in maintaining the health of the soil and ensuring sustainable farming practices.



For this particular year, Raisin SA is focusing on planting crops that will generate income for the farm, with plans to plant vines in the following year.

These five female emerging growers have been struggling for years to develop their land but with finances being an obstacle they were never able to without the necessary assistance. They are grateful for this opportunity that Raisin SA in collaboration with FREF have given them to enable them to develop their land and make a success of it.

During this visit from the NAMC, Raisins SA also took the opportunity to showcase one of the newly acquired farms from the Eksteenskuil Group. This farm is part of their broader strategy to expand agricultural production and optimize land use. The first phase of the land's development involves planting cotton for the current growing season. Stefan Jordaan, Portfolio Manager of BDSF, stated that following the cotton harvest, the farm will transition to cultivating vineyards, planting grapevines in 2025 and that this approach utilizes crop rotation principles, which helps maintain soil fertility and health, while also diversifying the farm's production and creating new revenue streams.

These interactions highlighted the collaborative efforts between agricultural institutions, producers, and policy bodies like the NAMC in driving sustainable and innovative farming practices. This visit not only strengthened the connection between the Vine Academy and Model Farm, Raisin SA, emerging growers, and the NAMC but also provided valuable opportunities for knowledge sharing and exploring ways to enhance agricultural development in the region. ■



Inligting & Kommunikasie



Raisins SA verwelkom
Wessel Lemmer
as nuwe Hoof
Uitvoerende
Beampte

Deur: Madene Conradie, Raisins SA

Raisins SA verwelkom Wessel Lemmer as nuwe Hoof Uitvoerende Beampte, wat op 6 Januarie 2025 sy amp sal aanvaar.

Ons erken die sukses van ons span onder leiding van ons uittredende uitvoerende hoof, Dr Ferdie Botha, wat die afgelope sewe jaar 'n uitstekende strategiese rol gespeel het in die groei van Raisins SA se kapasiteit en handelsmerkbewustheid.



Wessel Lemmer



Dr Botha laat ons met 'n wonderlike span hier by Raisins SA. Ek sien daarna uit om voort te bou op sy nalatenskap terwyl ons voortgaan om die rosyntjiebedryf te ontwikkel, nie net vir die produsente en verpakkers, maar ook in die belang van alle sleutelbelanghebbendes. Ons het almal 'n belang in die sukses van 'n volhoubare en winsgewende rosyntjiebedryf. Ons onmiddellike prioriteite is om die vraag na 'n uitstekende gehalte produk te bevorder, om nasionale rosyntjieproduksie te verhoog en om vertroue in 'n regverdige en veilige mark aan te moedig



Wessel, 'n gesoute landbou-ekoonom, se ervaring in landbou strek oor meer as 30 jaar sedert die begin van sy M.Sc.Agric graadstudie aan die Universiteit van die Vrystaat in 1993. Hy het die finansiële lewensvatbaarheid van produsente in die Laer-Oranjeriviergebied vir vloede van verskillende omvang bestudeer. Hy is terug in Upington om die sirkel van die bediening van die Suid-Afrikaanse rosytjiewaardeketting te voltooi.

Hy bring 'n gereedskapstel van relevante kennis en ervaring wat die afgelope 18 jaar opgedoen is. Hy het gewerk as 'n senior landbou-ekoonom: Markte by Graan SA, 'n graan- en oliesaadprodusente-organisasie en as hooflandbou-ekoonom by Absa en hoof van die Sentrum van Uitnemendheid by die Kleinhandel- en Sakebankafdeling in Johannesburg. Hy en sy span het die landboumarkte en prysdrywers ontleed om toekomstige geleenthede en risiko's te identifiseer.

As hoofbestuurder van Agbiz Graan in Pretoria het hy nuwe inisiatiewe en voorspraak ontwikkel namens die graanbergingsektor, wat gesamentlik 98% van alle JSE-genoteerde silo's besit en ongeveer 70% van alle graan wat in Suid-Afrika geproduseer word, stoor.



“

Wessel se visie is in lyn met Raisins SA se strategie (Rise v.2) vir die volgende vyf jaar. Hy is bekend vir sy strategiese denke, kreatiwiteit, aandag aan detail en sterk fokus op implementering en lewering. Hy is eerlik, oop en sê presies wat hy bedoel. ■

”

David van der Merwe
(Voorsitter: Raisins SA)



Raisins SA Appoints Simone Oliphant as Acting Chief Executive Officer

By: Chantelle Kotze, Raisins SA



Raisins SA is pleased to announce the appointment of Simone Oliphant as the Acting Chief Executive Officer, effective until the new CEO, Wessel Lemmer assumes office on January, 6 2025.

Simone Oliphant, who has been with Raisins SA for seven years, has demonstrated exceptional leadership and strategic vision in her role as Transformation Manager, driving key initiatives in operational efficiency, sustainability, and market expansion. With her deep understanding of the company's culture, values, and operations, Mrs. Oliphant is uniquely positioned to guide Raisins SA through this transitional period and lead the organization forward.

"I am honored to step into the role of Acting CEO and look forward to leading Raisins SA as we continue to focus on delivering high-quality service to the raisin industry, our farmers and packers", said Simone Oliphant. "I am committed to ensuring the continued growth and success of the company while working closely with our talented team and stakeholders to build on our strong foundation."

The appointment comes after the recent departure of Dr Ferdie Botha, who served as CEO for seven years.

Raisins SA is confident that under Simone Oliphant's leadership, the company will continue to thrive, until Wessel Lemmer arrives January 2025. ■



Cannabis in the workplace

By: Lilani Engelbrecht, WCE Investments

Since the Constitutional Court declared the private use of cannabis legal, the question the employer is constantly facing is how to deal with this in a workplace environment.

Reference must be made to the Constitutional Court's decision in *National Director of Public Prosecutions and others v Prince ZACC 30, 2018* where the court found that the using, cultivating, and possessing of cannabis by adults in the privacy of their homes was declared unconstitutional.

The above decision by the Constitutional Court has a great impact on workplace discipline and how one must go about when dealing with situations pertaining to employees who test positive for cannabis in the workplace.

The Employer argued that the outcome of the Prince case will not have any bearing on the zero-tolerance policy regarding the possession and use of cannabis because the workplace was not a private space.

In the recent Labour Appeal Court case of *Bernadette Enever and Barloworld Equipment South Africa* delivered on 23 April 2024 the court reiterated the following when dealing with these types of scenarios.



Whether the case relates to alcohol or cannabis the Employer must always proof the following:

1. The Employee tested Positive for alcohol/cannabis
2. The Employee's ability to perform his/her work is impaired because of the alcohol/cannabis
3. The Employee creates an unsafe working environment
4. Employee's position and working conditions must also be taken into consideration

In the Bernadette Enever and Barloworld Equipment case the employee was dismissed because she used cannabis for medical purposes and tested positive for cannabis contained in the human body when reporting at the workplace.

The Labour Appeal Court found that her dismissal was unfair although the employee tested positive for cannabis the employee does not operate or work with heavy or dangerous machinery, her job is plainly an office desk job, and she is able to competently perform her designated job.

It is imperative to always bear in mind that the nature of the job determines the amount of evidence required to justify dismissal.

When an employee reports for duty under the influence of liquor or any other substances it will be advisable to contact your legal advisor to obtain advise pertaining to dealing with the matter in the correct way that does not impose risk on the Employer. ■





Christmas Recipe



Soft and chewy oat and raisin cookies with walnuts in a jar

By: Sam Linsell, Drizzle and Dip

These oat and raisin cookies make the perfect Christmas gift. Include a card with the recipe instructions (handwritten or printed). You will need to add melted butter, one egg and vanilla to complete this recipe.

Makes 12 large cookies

- 150 grams whole rolled oats (1 ½ cups)
- 150 grams (1 cup) raisins or sultanas
- 150 grams (¾ cup) light brown sugar
- 40 grams walnuts, chopped
- 125 grams cake or all-purpose flour (1 cup)
- 1 tsp cinnamon
- ½ tsp baking soda/bicarbonate of soda
- Pinch of fine salt
- 1 large free-range egg
- 2 teaspoons vanilla extract or essence
- 115 grams of salted butter (½ cup or 1 stick), melted



If you are making these cookies in a jar:

Fill a 900ml (2 pints) wide-mouth jar with the dry ingredients in the following order: oats, raisins, sugar, walnuts, flour (mixed with cinnamon, baking soda and salt).

To make the cookies, preheat the oven to 180C/350F and line a large baking sheet with baking paper.

Melt the butter in a small pot or microwave, then cool slightly.

Mix all the dry ingredients into a large bowl until well combined.

Beat the egg with the vanilla.

Add the melted butter, beaten egg & vanilla and mix with the dry ingredients until well combined. You can do this by hand.

Divide the dough into 12 pieces (weighing approx. 55 grams each) and roll into balls with your hands. Place these balls on the baking sheet allowing space between the cookies to spread. Press down on each dough ball a little to flatten.

Bake for 12 – 13 minutes until golden brown on the top and edges. Allow to cool on the baking sheet.

If you are making these cookies from the recipe alone:

Beat the butter and sugar with an electric mixer until light and fluffy. Approx 2 – 3 minutes. You can use a stand mixer with the paddle attachment for this recipe.

Add the egg and vanilla and beat until well incorporated.

Add the rest of the dry ingredients and mix briefly until well combined.

Roll and bake the cookies as per the recipe above. ■





AridEco projek

Deur: Madene Conradie, Raisins SA

Raisins SA is vanaf einde Julie 2024 getaak om die Oranjerivier se rosynehektare te karteer tot op blokvak, in samewerking met FruitFly Africa.

Die doel van die oefening was driedig:

1. Opdateer van Agrihub data.
2. Akkurate uitrol van vrugtevliespatte langs die Oranjerivier.
3. Visuele voorstelling van Agrihub op die AridEco program, tesame met ander elemente (GariepWatch data, FFA hotspots, weerdata ens).

Deur die data op blokvak te versamel, verseker dit ook dat u as produsent nie meer jaarliks daarmee geplaag word nie, en nuwe lugfoto's kan gebruik word om die uitkappings//nuwe aanplantings aan te wys.

Sien uiteensetting tot en met 5 Desember 2024 op die volgende bladsy.

Die oefening het baie tyd, aandag, bloed en sweet in beslag geneem, en ons wil hartlik elke produsent bedank wie hul samewerking gegee het. 'n Groot dank aan almal wie hul Agrihub data getrou op datum hou – ons kan slegs werk met die inligting wat ons vanaf u ontvang. Hoe akkurate dit dus is, hoe beter ingelig is die hele bedryf.

Ons sien uit om vorentoe te beweeg, en op 'n beter wyse data in intelligensie te omskep wat die bedryf kan dien.

Ons poog om die uitrol van die tweede been van die AridEco projek in die Olifantsrivier na afloop van die 2024/25 oesseisoen te begin.



Uiteensetting tot en met 5 Desember 2024:

Area	Hektare	Voltooi	%Voltooi	Duplikasies	HEKTARE UITSTAANDE
Dyasonsklip	190.00	126.37	1.00	(63.84)	-
Friersdale	32.00	32.00	1.00		-
Gariep	5.00	-	-		5.00
Groblershoop	741.00	643.78	0.96	(71.64)	25.58
Grootdrink	372.00	265.97	0.86	(64.18)	41.85
Kakamas	2,607.00	2,239.88	0.93	(192.41)	174.71
Kanoneiland	1,613.00	1,337.44	0.99	(264.99)	10.57
Karos	287.00	234.43	0.90	(27.88)	24.69
Keimoes	3,205.00	2,412.82	0.83	(303.87)	488.31
Louisvale	184.00	182.37	0.99		1.63
Marchand	875.00	861.60	1.00	(13.47)	
Sesbrugge	53.00	30.52	0.58		22.48
Upington	2,381.00	1,992.06	0.79	152.43	541.37
Augrabies	955.00	783.97	0.86	(44.61)	126.42
Jooste Eiland	13.00	13.00	1.00		-
Leerkrans	4.80	4.80	1.00		-
Neilersdrift	21.70	21.70	1.00		-
TOTAL:	13,539.50	11,182.71			
DUPLISERINGS		(894.46)			
UITSTAANDE 5 DESEMBER 2024		1,462.33			1,462.61




SAGAP oudits 2024

Deur: Madene Conradie, Raisins SA

PPECB ouditeure sal vanaf 13 Januarie 2025 in die Olifantsrivier, en 1 Februarie 2025 in die Oranjerivier teenwoordig wees vir SAGAP droogbaanoudits.

Daar sal ook verskeie *unannounced* oudits plaasvind, dus moet produsente asseblief daarop let en seker maak dat alles ten alle tye in plek is op die plaas.

Produsente moet asseblief alle droogbaanhuurooreenkomste voor 1 Januarie 2025 deurstuur na:

 madenec@raisinsa.co.za

Die volgende graderings word geoudit:



In totaal is daar ongeveer 236 oudits wat gaan plaasvind.

Onthou asseblief, dat deur die hulp van die verpakkers, die industrie 'n afslag per oudit kon beding van **R5394,75**.

Produsente moet dus asseblief altyd via verpakkers 'n oudit skeduleer, en nie self nie.

Dankie vir u samewerking om te verseker dat SA die voorloper kan wees in naspeurbaarheid en voedselveiligheid.

Indien u sien dat 'n medeprodusent nie volgens die standaard optree nie, is u welkom om die aangeleentheid te rapporteer by: admin@raisinsa.co.za

Baie sterkte met die seisoen. ■



Orange Descent Canoe Marathon

Deur: Chantelle Kotze, Raisins SA

Die Orange Descent het vanjaar sy 13de bestaansjaar gevier, en Raisins SA was bevoorreg om weer aan elke deelnemer 'n "power-pack snack" te borg. Daar was vanjaar 63 deelnemers.

Die Suid-Afrikaanse K1 Rivierkampioenskappe het oor twee dae gestrek waar die roeiers die eerste dag 26km moes roei, en die tweede dag 28km.

"Ons was bevooreg om vir Hamish Lovemore hier te hê, hy was by die Olimpiese Spele in Parys en het ongelooflik goed doen deur die 4de vinnigste tyd vir die 1000 meter K1 sprints te roei. Hy was ook in November as Natal se sportman van die jaar aangewys. Hamish Lovemore en sy broer Thomas het eerste en tweede prys by vanjaar se Orange Decent behaal" sê Waldo van der Linde, organiseerder van die geleentheid. ■



“

Die resies was weereens 'n groot sukses gewees, en Raisins SA sien uit om weer volgende jaar 'n bydrae te lewer

”






Kalender

Desember 2024

**Tentatiewe datums wat steeds kan verander*

DECEMBER 2024							
Sunday	Monday	Tuesday	Wednesday	Thursday	Friday	Saturday	
1	2	3	4 Olifantsrivier Velddag Toer	5	6 RAISINS SA BOARD MEETING 3	7	
8	9	10	11 Skole sluit kwartaal 4	12	13	14	
15	16 GELOFTEDAG	17 NUUSBRIEF 4	18	19	20 Raisins SA kantoor sluit	21	
22	23	24	25 KERSFEES	26 WELWILLENDHEIDS DAG	27	28	
29	30	31	1	2	3	4	



Kalender

Januarie 2025

**Tentatiewe datums wat steeds kan verander*

Sunday	Monday	Tuesday	Wednesday	Thursday	Friday	Saturday
29	30	31	1 NUWEJAARSDAG	2	3	4
5	6 Raisins SA Kantore open	7	8	9	10	11
12	13	14	15 SKOOL BEGIN KWARTAAL 1	16	17	18
19	20	21	22 Raisins SA/VAMF Kultivar proewe opedag	23	24	25
26	27	28	29	30	31	1



Bedryfstrukture



Gariep Watch terugvoer 2024

Deur: Fritz Bekker, Gariep Watch

Baie dankie vir Raisins SA se bydrae tot die suksesvolle uitvoering van die Gariep Watch inisiatief. .

Gariep Watch (GW) het oor die laaste drie jaar saam met die Universiteit van Stellenbosch navorsing gedoen oor die watergehalterisiko's in die laer Vaal-Oranjerivier stelsel. Daar is 'n bestuursplan ontwikkel om hierdie risiko's aan te spreek wat gedeeltelik hieronder uiteengesit word. Die belangrikste watergehalte-risiko's is soos volg:

1. Storting van 1 700 000 miljoen liter ongesuiwerde rioolwater per dag in die bo-Vaalrivier vanaf Gauteng se suidelike munisipaliteite. Hoër watergebruik met Fase 2 van die Lesotho Hoogland Waterprojek (LHWP) gaan meer rioolstortings veroorsaak.
2. Besoedelde reënval-afloop en ander stortings van digbewoonde areas, myne and industrieë in Gauteng na die bo-Vaalrivier. Die volume neem toe met populasiegroei en gaan teen 2050 690 miljoen m³/jaar beloop.

3. Storting van 132 130 ton/sout/jaar met geneutraliseerde suurmynwater vanaf die ou goudmyne in die Witwatersrand. Hierdie sulfaatbevattende sout eindig op in stroom-af besproeiingswater.
4. Tekort aan verdunningswater in die Vaaldam wat gebruik word om die suurmynwater in die Vaal Barrage te verdun. Probleme met die LHWP en droë toestande in die bo-Vaalrivier opvanggebied veroorsaak hierdie risiko. Watergehalte in die laer Vaal-Oranjerivierstelsel mag aansienlik verswak sonder hierdie verdunning.





5. Loslating van ongesuiwerde riool vanaf munisipaliteite in die Noord-Wes en Noord Kaap Provinsies. Die gemiddelde E. coli telling van hierdie loslatings is 8.5 miljoen tellings/100 ml. Die rioolwater word geassosieer met hoë bakteriologiese tellings, ammonium, fosfaat, stikstof, mangaan en yster.
6. Loslating van dreineringswater vanaf besproeiingsgebiede. Die dreineringswater word geassosieer met hoë sout (sulfaat en chloried), nitraat, fluoried, boor en chroom konsentrasies.
7. Seisoenale en onseisoenale vloede in die Vaalrivier wat baie besoedelingstowwe na die laer Oranjerivier vervoer. Die riviersedimente word hierdeur gekontamineer met langdurige impakte op watergehalte.
8. Fase 2 van die Lesotho Hoogland Waterprojek wat vanaf 2028 basisvloei van nog 490 miljoen m³/jaar uit die bolope van die Oranjerivier gaan onttrek. Waergehalte kan aansienlik verswak sonder hierdie verdunning.
9. Hoë nutriëntvlakke (N-P-K) in die besproeiingswater hou 'n risiko in vir oorbemesting. Veral die kalium en stikstof is hoog en moet in berekening gebring word wanneer op 'n bemestingsprogram besluit word.
10. 'n Risiko-analise het gewys dat die volgende watergehalte-veranderlikes 'n risiko inhou vir die landboubedryf: E. coli (virusse, bakterieë, parasiete en swamme), totale stikstof (N), sout (TDS), chloried, gesuspendeerde stowwe (TSS) en yster (Fe).

Regstellende- en bestuursmaatreëls word voorgestel waarvan verskeie reeds geïmplementeer word. Hieronder volg terugvoer rakende die huidige toestand van die rivier asook vordering met regstellende stappe:

- Die kwartaallike monitering van 2024 wys 'n aansienlike verbetering in bakteriologiese tellings in die laer Vaalrivier. Die mees onlangse E. coli tellings was 2 by Vanderkloof en 3 by Vaalharts. Die middel Oranjerivier stroom-af van Vanderkloof en Hopetown het ook verbeter met beduidend laer E. coli tellings. Orania is nou die grootste bron van bakteriologiese besoedeling met 'n E. coli telling van 579 wat in September 2024 gemeet is. Die laer Oranjerivier se watergehalte is ook besig om stadig te verbeter met opgraderings aan die Kameelmond rioolsuiweringswerke wat vrugte afwerp.
- Druk word volgehou op die munisipaliteite om rioolwater behoorlik te suiwer. Dit sluit in kriminele aanklagte, DWS direkteure en klagtes by die SA Menseregtekommissie en die groen skerpioene. Hierdie prosesse sal nou ook met Orania gevolg word.
- Die onlangse cholera uitbreking het die druk op die Noord-Wes en Noord-Kaap munisipaliteite aansienlik verhoog. GW het die nuutste navorsing rakende hierdie munisipaliteite se bydrae tot swak watergehalte onlangs aan die adjunk-minister van die Departement van Waterwese and Sanitasie (DWS) aangebied. Daar word tans saam met VOCMA gewerk en inligting gedeel.



- GW lewer insette met die DWS prosesse waar die waterhulpbronklasse en watergehalte-doelwitte vir die laer Oranjerivier bepaal word. Die GW watergeheldatabasis bevat tans die enigste betroubare inligting en die onlangse navorsing spreek hierdie DWS behoeftes aan. GW deel ook biologiese en toksikologiese inligting van spesialisstudies wat onderneem is.
- Die DWS gaan binnekort die Waste Discharge Charge System (WDCCS) in werking stel met die VOCMA wat boetes gaan invorder vir alle punt en diffusebronne van besoedeling. Dit sluit dreineringswater vanaf besproeiings-areas in. Die GW navorsing toon dat dreineringswater en rioolwater in die laer Vaal-Oranjerivier sisteem minder as 10% of 90 000 kg van die totale soutlading veroorsaak. Die meeste sout kom vanaf die bo-Vaalrivier met tot 3.5 miljoen ton per jaar wat vir 2022 bereken is. Hoë soutkonsentrasies tydens langdurige hoogvloeiperiodes veroorsaak dat die soutwater op gewasse besproei word en bydra tot die hoë soutkonsentrasies in landbou-dreineringswater. Daar is ook sterk aanduidings dat die hoë vlakke van bakteriologiese besoedeling in die rivierwater ook verantwoordelik is vir die hoë E. coli tellings in die besproeiings-terugvloeiwat (dreineringswater). Hierdie aspek moet nog verder ondersoek word.
- GW se navorsingsvoorstelle rakende die besoedeling vanaf die bo-Vaalrivier sluit in 'n strategie om genoegsame kapasiteit in die Bloemhofdam te verseker sodat onseisoenale loslatings voorkom kan word. Verder sluit die strategie gesinchroniseerde loslatings van die Vanderkloofdam in om Vaalrivier-besoedeling betyds te verdun tydens hoogvloeiperiodes.
- Die DWS se soutbestuurs-strategie in die laer Vaalrivier werk nie. Soutkonsentrasies het sedert 2018 met 50% toegeneem en hierdie verhoogde soutkonsentrasies bereik die laer Oranjerivier vir periodes van tot 270 dae per jaar. Hierdie strategie sal op die hoogste vlak met die DWS en VOCMA herbesin moet word en GW gaan hierdie inisiatief lei.
- Produsente moet die konsentrasies plantnutriënte in hul besproeiingswater bepaal voordat besluit word op die volumes bemestingstowwe wat toegedien gaan word. Groot besparings van veral stikstof en kalium kan gemaak word en oorbemesting kan voorkom word.
- GW werk tans saam met ander nie-regeringsorganisasies in die bo-Vaalrivier om inligting uit te ruil en besoedelde loslatings te rapporteer en te monitor. Die GW navorsing wys dat die Vaalrivier se impak op die Oranjerivier onderskat word en probleme in die bo-Vaalrivier gaan op die hoogste vlak aangespreek moet word.
- Daar word voorgestel dat GW vanaf 2025 verskeie nuwe projekte deur plaaslike subkomitees moet aanpak. Een fokusgebied gaan wees om deurlopende data van hospitale en klinieke se opnames en sterftes as gevolg van wateroordraagbare siektes te versamel. ■



Is South Africa spending sufficiently on agricultural research?

By: *Wandile Sihlobo, Chief Economist*

Technological improvement is a primary catalyst for the growth of the South African agricultural sector.

Thus, South Africa must continue to spend money on research and development to support the long-term growth of the agricultural sector. However, in recent years, the country seems to be spending less on research, which is worrying, especially during increased climate change risks and the need for even greater spending on research.



Consider the work done jointly by the University of Pretoria and the Agricultural Research Council (ARC) for the international Agricultural Science and Technology Indicators in 2014, which estimated that South Africa in that year spent about R2,5 billion on agricultural research – by public, university and private sector agencies.

The most recent government appropriation reports reported that the Department of Agriculture transfers an annual total of R1 billion to the Agricultural Research Council to operate its various programmes to support the agricultural sector. This is roughly 1% of the total budget for the Department of Agriculture, Land Reform and Rural Development.

Thus, one could raise questions about whether this is enough and in line with global norms. We know from previous work that South Africa's agricultural research spend as a share of the budget and value of agricultural output is the highest in Africa, with only Nigeria coming close. There, of course, questions about the efficiency of the spending on agricultural research, which would involve enquiring how much goes to overheads and other non-research expenditures and then, more fundamentally, the ARC focus on relevant research focus areas, did it appoint the best scientists and what is the state of its laboratories, experimental farms and general aspects of maintenance and upgrading of equipment. This requires detailed studies and detailed evaluation reports to understand whether we are getting value for our taxpayers' money.

Over the years, role players in the agricultural industry realized that the funding to the ARC and the delivery of critical technical improvements have been insufficient and slow.



Therefore, the various commodity organizations have a question: How much do these industry bodies allocate to agricultural research? From the National Agricultural Marketing Council's 2023 report on Statutory Levies in the agricultural industry, we learned that these organizations use R460 million (or 45%) of the R1,022 billion levy income to fund specific research programmes.

Table 1 below provides a detailed breakdown and comparison of the research spending by the top 12 industries in South African agriculture. These 12 commodities contribute a significant share to South Africa's total gross output value in 2023. Poultry, sugarcane and maize industries fund their research activity from different sources.

Table 1: Research expenditure by the 15 largest commodity groups in South African agriculture

Commodity	Production value 2023 ('000)	Levy income 2023 ('000)	LEVY as % of production value	Research spend ('000)	Research spend as % of production value	Research spend as % of levy
Red meat	58 109 307	52 222	0,1%	6 888	0,01%	13%
Citrus	38 922 033	262 925	0,7%	156 148	0,40%	59%
Dairy	27 547 757	61 294	0,2%	3 309	0,01%	5%
Soybeans	23 214 779	86 822	0,4%	68 250	0,29%	79%
Winter cereals	24 912 224	73 244	0,3%	57 230	0,23%	78%
Eggs	13 428 161	9 265	0,1%	91	0,00%	1%
Table grapes	11 805 000	43 413	0,4%	10 202	0,09%	23%
Potatoes	11 091 251	51 408	0,5%	14 588	0,13%	28%
Pork	10 450 381	51 360	0,5%	1 873	0,02%	4%
Deciduous fruit	10 071 415	168 962	1,7%	86 536	0,86%	51%
Viticulture (wine)	6 287 853	123 741	2,0%	13 289	0,21%	11%
Nuts	6 287 853	65 448	1,0%	35 838	0,57%	55%

Source: NAMC, DoA, and various sources

Note: We could not analyse the research expenditure for maize, poultry and sugar as this is funded outside the levy proceeds. Grain SA, does however provide R11 million funding from their voluntary levy/membership fees to support research in all the grains.



Table 1 illustrates some stark realities about how the various commodity organizations focus on research. The R156 million allocation to research by the Citrus Industry via Citrus Research International (CRI) shows the industry's commitment to research. The growth in the citrus industry in terms of area planted, production efficiency (volume/tree), combating diseases, and how to deal with the strict demands from export markets have been the backbone of a well-funded, focused, and successful research programme.

This is a substantive research activity implemented mainly by universities and their scientists. The deciduous fruit, table grape, wine and nut industries follow with similarly designed and funded programmes. Soybeans and wheat industries also spend substantive amounts of the levy income on research. The soybean industry has benefited from decades of funding by the Protein Trust as well as from imported technology in seed genetics and cultivation improvements.

More revealing is the column in the table that shows research funding by the industry expressed as a share of total gross value. The deciduous fruit industry spends almost 1% of Gross Value on research, followed by Citrus with 0.4%.

It is worrying that the Red Meat Industry only allocates R6,8 million to research – only about 0.01% of the industry's total value. Given this industry's many questions, issues and problems, one would expect a much bigger research fund.

Just one decent research experiment would take about half of the budget. If one takes the example of citrus fruit and spend at least 0.5% of the value of the industry on research, then they should have about R233 million available for red meat research. This is massive and substantially more than the current R6,8 million and will be a serious programme that could stimulate the much-needed growth in the industry. It is time for a much-needed discussion in the red meat industry.

Overall, we deduce from this data that South Africa needs to review its budget allocations for research and do more to ensure increased spending. Climate change has brought new diseases and various challenges for agriculture. There is also a need for better production methods and breeding programmes, all of which will require careful and well-funded research. This is the responsibility of both the government and the private sector.

We are grateful for the insights and contribution in this note of Professor Johann Kirsten, Director of the Bureau for Economic Research at Stellenbosch University. ■



Vine Academy and Model Farm

Oorsig Kwartaal 4

Deur: Desiree Adams en Jurie
Becker, VAMF



Sukses is geen toeval nie. Dit is harde werk, deursettingsvermoë, leer, studeer, opoffering, en bowenal liefde vir wat jy doen of leer om te doen.



By die Vine Academy en Model Farm streef ons na uitmuntendheid in landbou-onderrig en opleiding, en ons is daartoe verbind om studente die nodige vaardighede en kennis te bied om suksesvol in die landbousektor te wees.

Ons fokus op praktiese ondervinding, innovasie, en die ontwikkeling van leierskap om ons studente te help om hul volle potensiaal te bereik. Ons werk saam met die landbougemeenskap om die beste onderrigstandaarde te handhaaf en ons studente te ondersteun in hul akademiese en professionele reis.

Ons inskrywing vanjaar beloop meer as 40 studente vir die 2025 inname met aansoeke wat gekom het, van so vêr as Parow in die Wes-Kaap. Van die aansoeke wat ontvang was, is 37 gekeur om by die Vine Academy and Model Farm te kan studeer. Ons is opgewonde oor die groei en sien uit daarna om hierdie getal studente te verwelkom en hulle te ondersteun op hul akademiese reis. Die akademie sal op 15 Januarie 2025 sy deure vir al ons studente oud en nuut open.





DIPLOMASTUDENTE NQF 5

Van die 15 studente (2023-inname) wat in Julie met hul NQF4-sertifikaat in Plantproduksie met spesialisering in wingerdbou gegradeer het, gaan 12 voort met hul NQF5-diploma in Plantproduksie met spesialisering in wingerdbou. Hulle is klaar met hul eerste semester en sal op 15 Januarie 2025 met hul tweede en laaste semester begin en in Julie 2025 met hul diplomas gradueer.

SERTIFIKAAT STUDENTE NQF4

Van die 21 studente (2024-inname) wat met hul NQF4-sertifikaat in Plantproduksie begin het met spesialisering in wingerdbou in Januarie het al 21 die volle jaar voltooi. Sestien het reeds aangedui dat hul met die NQF5-diploma in Plantproduksie met spesialisering in wingerdbou volgende jaar (2025) sal voortgaan.

Ons studente het hul 2024 eksamens suksesvol afgelê, en die uitslae sal vanaf middel Desember 2024 beskikbaar wees. Top presteerders sal in die nuwe jaar bekend gemaak word.

Ons wens al ons studente welverdiende rus toe om hul batterye te herlaai vir die opwindende jaar wat voorlê, en ons sien uit na die begin van die 2025-akademiejaar vol opwinding.

KORTKURSUSSE

Die Vine Academy bied ook verskeie kortkursusse aan wat volgende jaar in Maart sal afskop, en wat gerig is op spesifieke areas van landbou-opleiding en vaardigheidsontwikkeling. Ons hoop om weer die waardevolle ondersteuning van die landbougemeenskap te ontvang, net soos wat ons vanjaar beleef het. Hierdie samewerking is van groot belang om ons kursusse suksesvol aan te bied en ons kursusgangers die beste moontlike opleiding te verseker.

Sien beoogde datums op volgende bladsye.

Ander kursus wat die gemeenskap ook aan kan deelneem is die modulêre kursus wat deur SATI (South African Table Grape Industry) aangebied word. Hierdie kursus fokus op die ontwikkeling van spesifieke vaardighede en kennis binne die tafeldruifbedryf. Kursusdatums sal aan die begin van die nuwe jaar beskikbaar gestel word vir persone wat in hierdie sektor belangstel.

MODELPLAAS

In 2024 is daar 1ha Sugra39/Paulson aangeplant by die modelplaas. Daar is ook 5.56 ha lusern gevestig. Die algehele stand van wingerdgesondheid en groeikrag lyk besonders goed. Die modelplaas se oesskatting lyk soos volg:

- **Droë tonne – 96 ton**
- **Wyn – 180 ton**

Selma Pete se deurslaan datum was 29 November 2024, en die Sugra39, 3 Desember 2024.

Ons sien uit na 'n voorspoedige 2025 seisoen saam met alle produsente. ■

LEARN • EMPOWER • GROW

SUGGESTED DATES	COURSE NAME	COST PP	DURATION
25-27 March	First Aid Level 2	R 1600	3 Days
1-2 April	Farm Machinery and Equipment Maintenance	R 1600	2 Days
15-16 April	Basic Computer Skills (Word, Excel and Email)	R 1000	2 Days
23-25 April	Leadership	R 6000	3 Days
27-28 May	Tractor Operator, Safety and Maintenance	R 1600	2 Days
3-4 June	Vineyard Pruning	R 1600	2 Days
8-9 July	Operate and maintain Irrigation Systems	R 1400	2 Days
5-7 August	Chemical operator, Practical Application, safe handling and storage of Agrochemicals	R 2100	3 Days
27-28 August	Plan and Develop Vineyard Trellising Systems	R 1600	2 Days
2-3 September	Identify and Control Pest, Diseases and Weeds in the Vineyards	R 1800	2 Days
16-17 September	Fertilisation principles in the establishment of vineyards	R 1600	2 Days
1-2 October	Aerial Spraying of Agrochemical products	R 3000	2 Days
7-8 October	SHE representative Training	R 1200	2 Days
21-24 October	Basic Introduction to Finance and Economics	R 4000	4 Days

The cost is calculated for a minimum of 10 attendees and includes a light meal per day.

For more information or to apply contact:
T: 054 050 1397 E: apply@vamf.co.za



**INTERNATIONAL
 AGRICULTURAL
 ACADEMY
 FOR AFRICA**

LEARN • EMPOWER • GROW

SU Short Courses in Table and Raisin Grape Production presented in collaboration with Raisins SA and SATI.

SUGGESTED DATES	COURSE NAME	COST PP	ONLINE PP	DURATION
5-8 May	SU Short Course 1: Table and Raisin Grape Production	R 4400	R 2800	4 Days
12-15 May	SU Short Course 2: Soil, Nutrition and Water management	R 4400	R 2800	4 Days
19-22 May	SU Modular Short Course 3: Cultivation practices, harvest and post-harvest handling	R 4400	R 2800	4 Days
12-14 August	SU Modular Short Course 4: Plant Protection	R 3300	R 2100	3 Days
19-21 August	SU Modular Short Course 5: Raisin grape production	R 3300	R 2100	3 Days

The cost is for a minimum of 10 participants and includes a light meal daily; costs may vary if attendance is lower.

For more information or to apply contact: andriesd@raisinsa.co.za



Content accredited by Stellenbosch University: NQF 6



Raisins

South Africa

Databasis

Vir 'n bedryf om optimaal te funksioneer, is dit van kardinale belang dat alle lede so goed ingelig moontlik is.

Verskeie platvorms word gebruik om inligting te versprei, met die twee vernaamste metodes e-pos en WhatsApp groepe.

Indien u slegs e-posse ontvang en ook op 'n WhatsApp groep wil wees, of omgekeerd, kontak asseblief vir

> *Chantelle epos*

> *082 596 8179*



NOTA

Indien u kontakbesonderhede verander, of indien u miskien weet van 'n rosyneprodusent wie nie inligting ontvang nie, sal dit hoog op prys gestel word indien u die inligting aan Raisins SA kan deurgee.



Kontak ons

Groenpuntweg 9, Kantoor 1, Keidebees

054 495 0283

www.raisinsa.co.za

Wessel Lemmer

Hoof Uitvoerende Bestuurder



wessel@raisinsa.co.za



+27 71 354 2948

Simoné Oliphant

Transformasie Bestuurder



simones@raisinsa.co.za



+27 71 814 2055

Stefan Jordaan

Agri Spesialis



stefanj@raisinsa.co.za



+27 82 305 1555

Madene Conradie

Inligting en Kommunikasie Bestuurder



madenec@raisinsa.co.za



+27 79 862 9752

Abraham Vermeulen

Navorsing en Ontwikkelingbestuurder



abrahamv@raisinsa.co.za



+27 83 458 3980